



# ATELIER<sup>®</sup>

tailor-made acoustic panels  
patented design

Version: 1.4

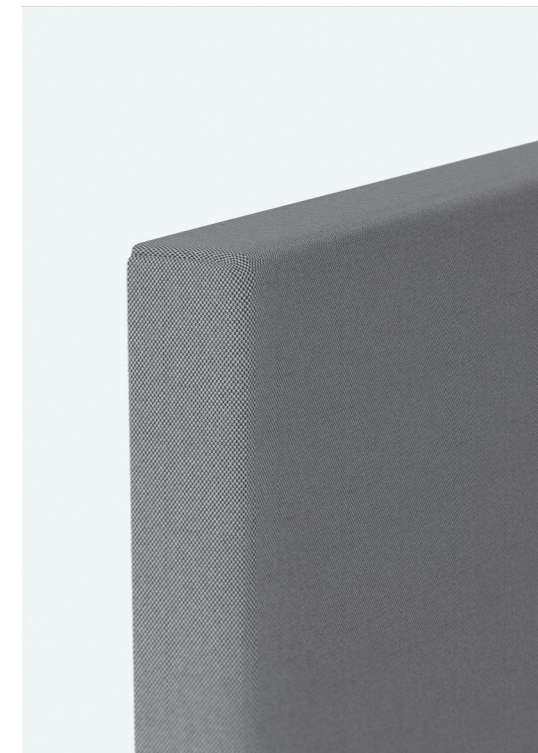
*design by Arkimera*

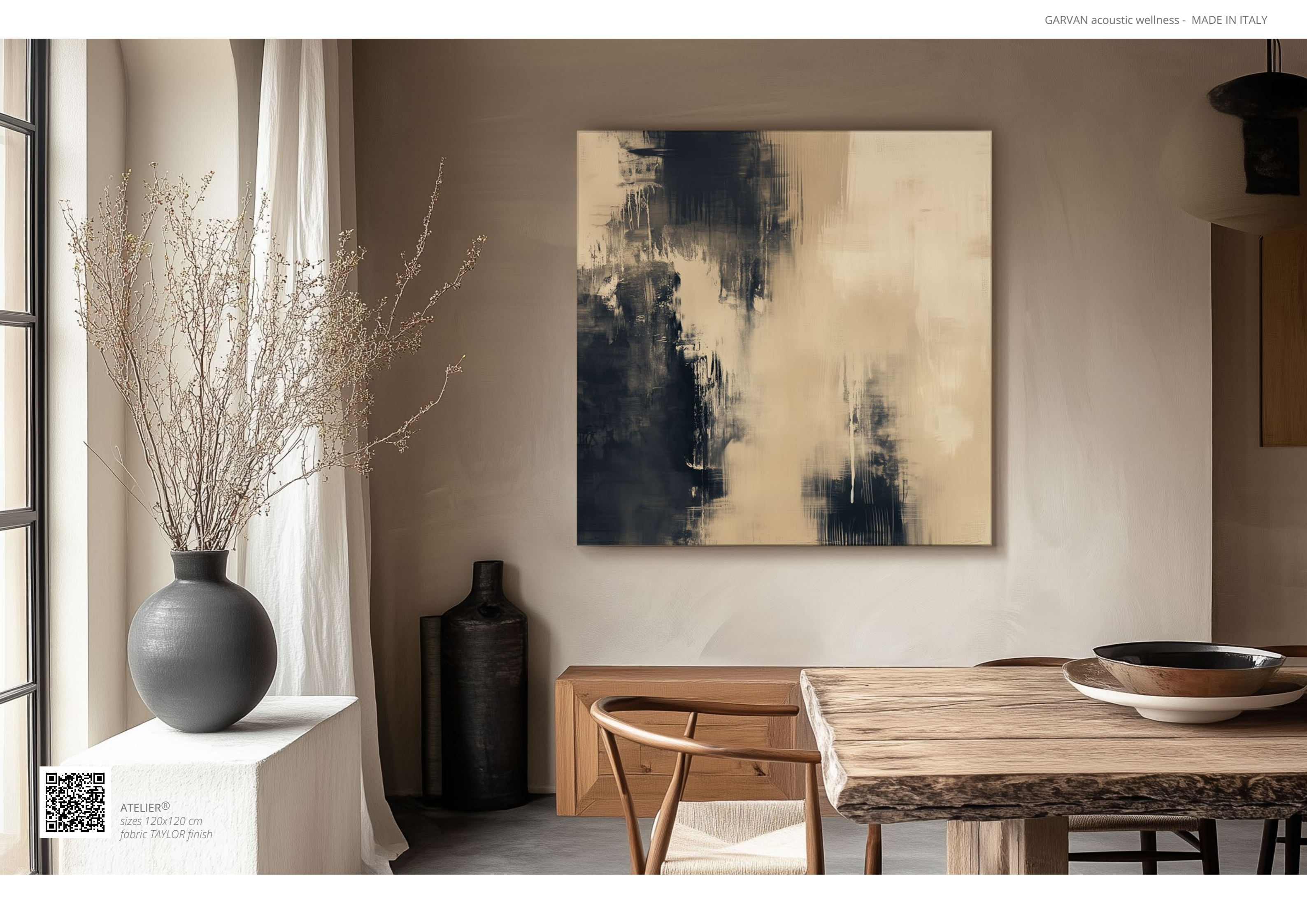
EN *Imagine a sartorial collection: the ability to line walls with tailored elements especially crafted for you by skilled craftsmen with the same care used for custom-made suits. This is the most adaptable collection of our production and of panels that can be crafted in different sizes and thicknesses to create new architectural effects. The special texture of our fabrics further enhances the elegance of the surfaces, for a perfect integration with a variety of different architectural and design solutions.*

IT *Immaginate una collezione sartoriale: la possibilità di foderare pareti con elementi a misura realizzati per voi dalla maestria di artigiani dell'imbottito che ricorda da vicino la cura con cui viene cucito un abito a misura. Si tratta della collezione più adattabile della nostra produzione, di pannelli che possono essere realizzati in misure e spessori differenti per creare effetti architettonici inediti. La particolare trama dei nostri tessuti ne esalta la texture superficiale impreziosendola e rendendola abbinabile ad una molteplice varietà di soluzioni spaziali.*

FR *Imaginez une collection vestimentaire : la possibilité de tapisser des murs avec des éléments conçus spécialement pour vous par le savoir-faire d'artisans qui rappelle le soin avec lequel on coud un costume sur mesure. Il s'agit de la collection la plus adaptable de notre production, composée par de panneaux en différentes tailles et épaisseurs, pour créer de nouveaux effets architecturaux. La texture particulière de nos tissus améliore la texture de la surface, qui peut être combinée avec une variété de solutions architecturales.*

DE *Stellen Sie sich eine Modekollektion vor: Sie können Wände mit maßgeschneiderten Elementen auskleiden, die von erfahrenen Handwerkern wie bei Maßanzügen speziell für Sie angefertigt wurden. Dies ist die anpassungsfähigste Kollektion unserer Produktion und Paneelen, die in verschiedenen Größen und Dicken gefertigt werden können, um neue architektonische Effekte zu erzielen. Die spezielle Textur unserer Stoffe verstärkt die Eleganz der Oberflächen und ermöglicht eine perfekte Integration in eine Vielzahl unterschiedlicher Architektur- und Designlösungen.*



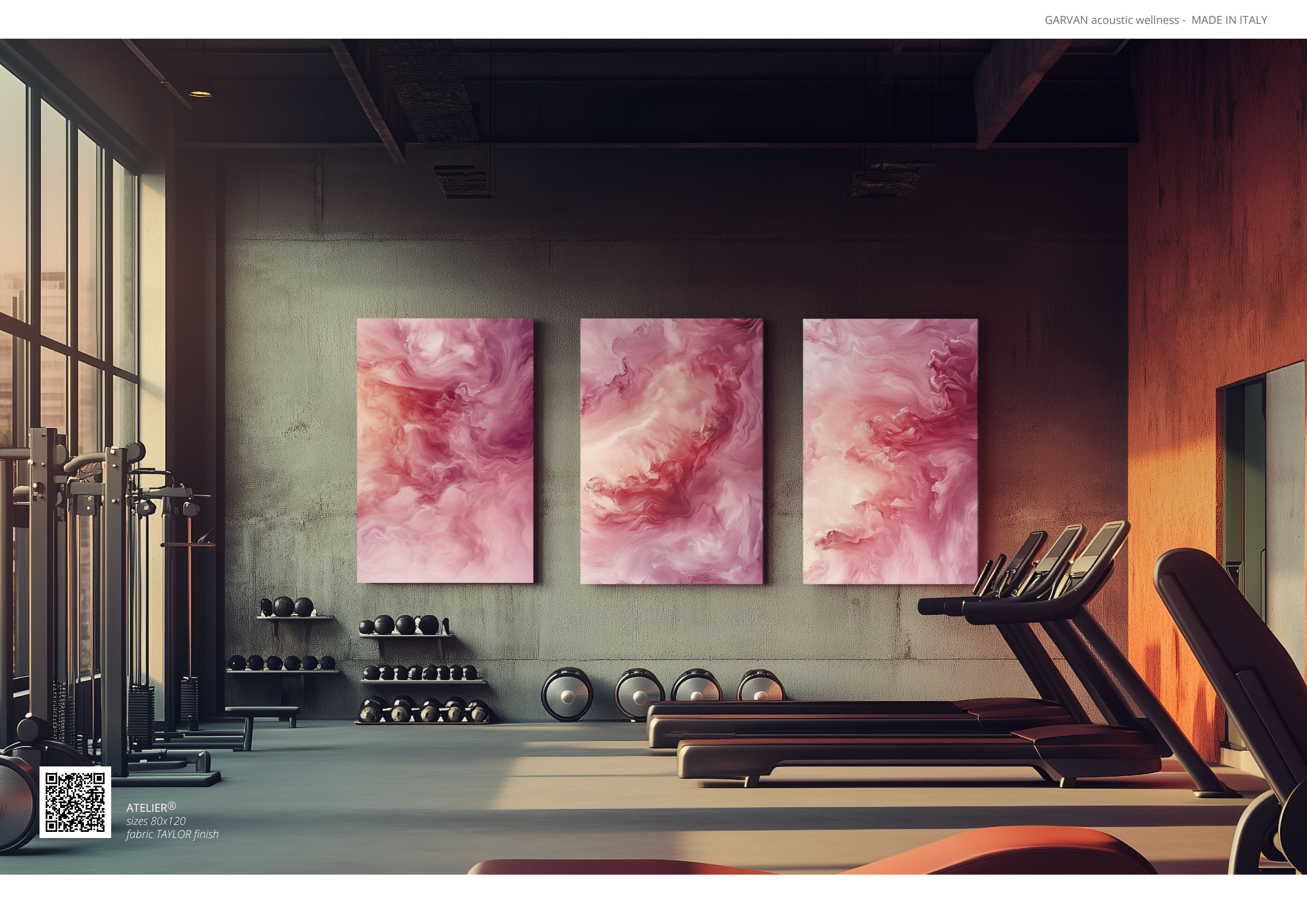


ATELIER®  
sizes 120x120 cm  
fabric TAYLOR finish



ATELIER®  
sizes 60x120  
fabric TAYLOR finish





ATELIER®  
sizes 80x120  
fabric TAYLOR finish



ATELIER®  
sizes 80x120  
fabric TAYLOR finish





ATELIER®  
sizes 60x120  
fabric TAYLOR finish





ATELIER®  
sizes 80x120  
fabric TAYLOR finish





ATELIER®  
sizes 80x120  
fabric TAYLOR finish





ATELIER®  
sizes 120x120 and 80x120  
fabric TAYLOR finish



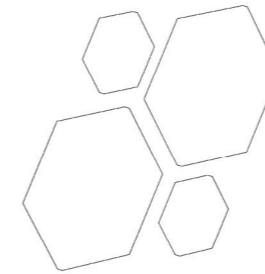


ATELIER®  
sizes 60x60 / 60x120  
fabric TAYLOR finish

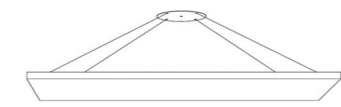
Speakers  
Garvan Goccia in ceramic



FIXING SYSTEMS



wall fixing



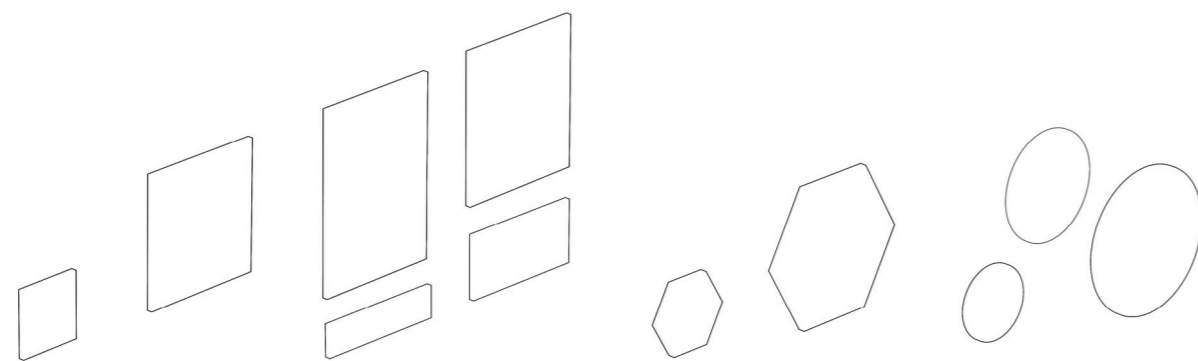
1-point ceiling suspended



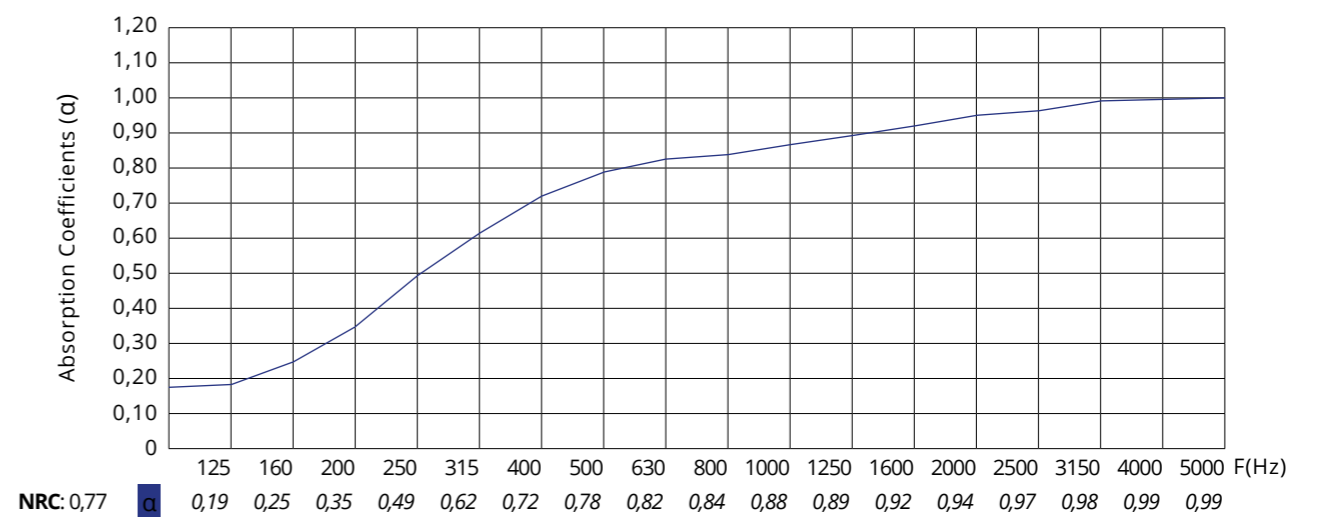
4-point ceiling suspended



magnet mounting  
(with security leash)



SOUND ABSORPTION ■ Atelier™ finish fabric 5 cm





## ECO fabric / tessuto

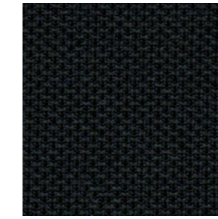
Microbaffle® /Parquet® /Surface®  
Area™ /Atelier® /Cinematelier®  
collection

EN An environmentally friendly knit fabric made from 100% yarn resulting from the reuse of plastic bottles. Eco is naturally unravelable, it is a compact technical fabric with a slightly three-dimensional appearance typical of jersey.

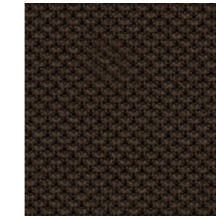
IT Tessuto a maglia environmentalmente-amico realizzato con il 100% da filato derivante dal riuso di bottiglie in plastica. Eco risulta indemagliabile per sua natura, si presenta come tessuto tecnico e compatto con aspetto leggermente tridimensionale tipico del jersey.

FR Tricot écologique, complètement fabriqué à partir de fil issu de la réutilisation de bouteilles en plastique. Eco est indémaillable, un tissu technique compact avec un aspect légèrement tridimensionnelle typique du jersey.

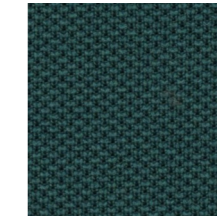
DE Umweltfreundliche Knitgewebe, Garn 100% aus der Wiederverwendung von Kunststoffflaschen. Eco ist maschenfest, ein kompakter technischer Stoff mit einem dreidimensionalen Stil, der typisch für Jersey ist.



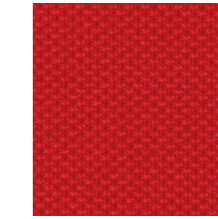
TE01



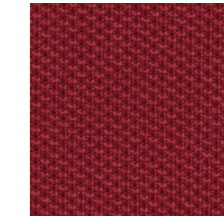
TE27



TE15



TE39



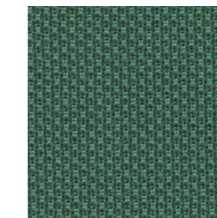
TE35



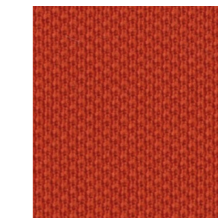
TE02



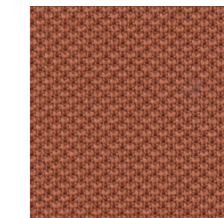
TE24



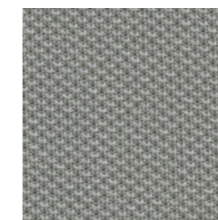
TE11



TE32



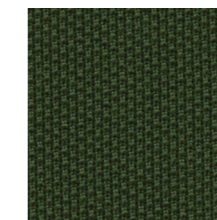
TE34



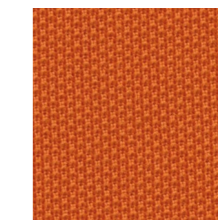
TE04



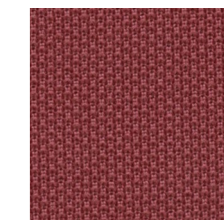
TE23



TE08



TE31



TE36



TE06



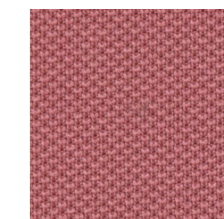
TE21



TE10



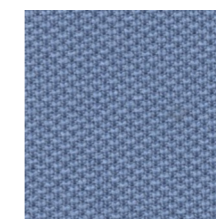
TE29



TE37



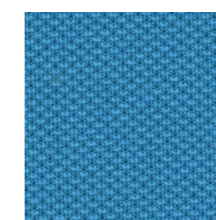
TE07



TE19



TE28



TE17

**COMPOSITION:** 100% Recycled Polyester  
**ABRASION RESISTANCE:** UNI ISO 12947/2 100.000  
**FLAMMABILITY:** EN1021/1-2 CRIB 5 BS 7176  
Medium Hazard California TB117 UNI 9175 Class 1IM  
**OEKO-TEX STANDARD 100**

EN The colours shown are purely indicative.

IT I colori riportati sono indicativi.

FR Les couleurs présentées sont indicatives.

DE Die angeführten Farben gelten lediglich als Beispiel.

## TAYLOR *fabric / tessuto*

Atelier® /CinemAtelier® collection

EN Produced with Trevira CS yarn, it is a very velvety, cotton-like fabric. It is compact and features alternating colours making up an elegant and refined texture.

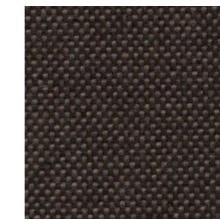
IT Prodotto con filato Trevira CS, è un tessuto al tatto molto vellutato e simile al cotone. Risulta compatto e caratterizzato da cromie alternate che compongono la sua texture conferendogli una elegante raffinatezza.

FR Fabriqué avec fils Trevira CS, il s'agit d'un tissu très velouté, semblable au coton. Très compact, il est caractérisé par une géométrie de couleurs qui donnent forme à sa texture élégante.

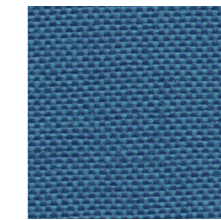
DE Aus Trevira CS Garn hergestellt, es geht um einen sehr samtigen, baumwollähnlichen Stoff. Er ist kompakt und zeichnet sich durch abwechselnde Farben aus, die seine elegante Textur ausmachen.



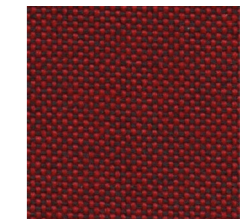
TT01



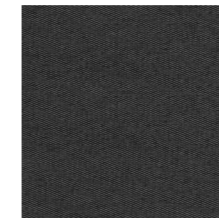
TT26



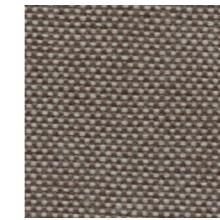
TT12



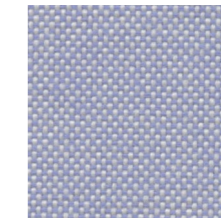
TT34



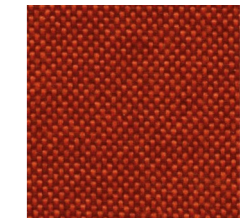
TT02



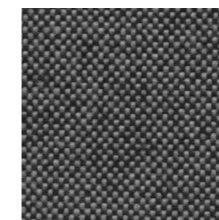
TT25



TT15



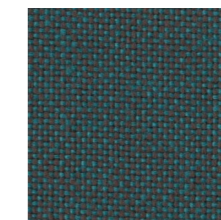
TT32



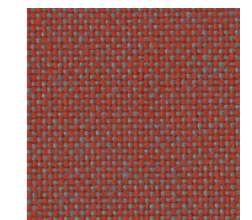
TT03



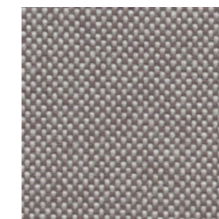
TT24



TT13



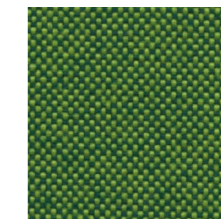
TT31



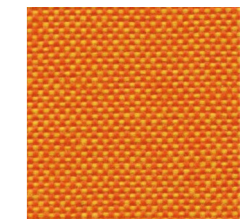
TT04



TT17



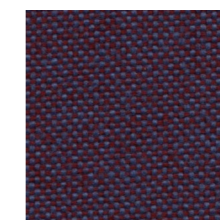
TT09



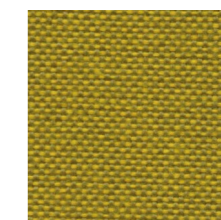
TT30



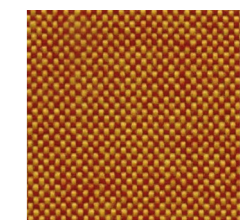
TT05



TT19



TT08



TT28



TT23



TT20



TT06



TT22

**COMPOSITION:** 100% Polyester  
**ABRASION RESISTANCE:** UNI ISO 12947/2 100.000  
 +- 10% martindale  
**FLAMMABILITY:** EN1021/1-2 CRIB 5 BS 7176  
 Medium Hazard California TB117 UNI 9175 Class 1JM  
**OEKO-TEX STANDARD 100**

EN The colours shown are purely indicative.

IT I colori riportati sono indicativi.

FR Les couleurs présentées sont indicatives.

DE Die angeführten Farben gelten lediglich als Beispiel.

# MARBLE

*stampa grafica*

Surface® / Atelier® / Quadra®  
collection

EN Marble veins embellished with gold veins, geological wonders that hint at incredible universes, iridescent liquids that float in the cosmos like notes in search of an impossible pentagram. The high-resolution prints of the MARBLE collection set sail from the plausible towards oceans of the unimaginable, with evocative, bewitching patterns, capable of surprising you at every turn. With custom sizes, printed on fabric or directly on polyester fibre, these sound-absorbing solutions will embellish any space or environment. The same printing technology allows the reproduction, on request, of any high-definition image you might want.

IT Venature marmoree impreziosite da filoni auriferi, meraviglie geologiche che abbracciano universi fantastici, liquidi iridescenti che fluttuano nel cosmo come note alla ricerca di un impossibile pentagramma. Le stampe ad alta risoluzione della collezione MARBLE salpano dal plausibile verso l'oceano dell'inimmaginabile: pattern evocativi, carichi di fascino e capaci di sorprendere. Completamente customizzabili nel formato, accoppiate alla stampa su tessuto o impresse direttamente su fibra di poliestere, queste soluzioni fonoassorbenti possono impreziosire ogni ambiente. Con la medesima tecnologia di stampa è inoltre possibile la riproduzione di immagini in alta definizione su richiesta del cliente.

FR Des veinures marmoréennes rehaussées de filons d'or, des merveilles géologiques qui embrassent des univers fantastiques, des liquides iridescents qui flottent dans le cosmos comme des notes à la recherche d'une impossible portée. Les gravures haute résolution de la collection MARBLE appareillent du plausible vers l'océan de l'inimmaginable : motifs évocateurs, chargés de charme et capables de surprendre. Entièrement personnalisables dans leur format, associées à l'impression sur tissu ou imprimées directement sur fibre de polyester, ces solutions d'absorption acoustique peuvent enrichir n'importe quel environnement. Avec la même technologie d'impression, il est en outre possible de reproduire des images en haute définition à la demande du client.

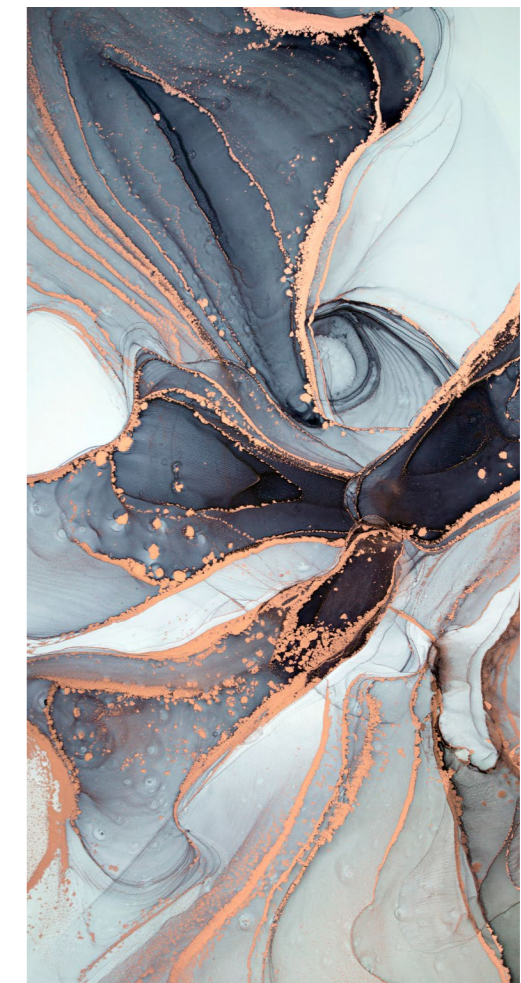
DE Marmorierungen, die mit Goldfasern veredelt sind; geologische Wunderwerke, die sich zu fantastischen Unikaten zusammenfügen; schillernde Flüssigkeiten, die wie Noten durch den Kosmos schweben, auf der Suche nach einem Pentagramm, das nicht zu finden ist. Die hochauflösenden Drucke der Kollektion MARBLE verlassen den Bereich des Plausiblen und tauchen ein in den Ozean des Unvorstellbaren: ausdrucksstarke, faszinierende und überraschende Muster. Diese schallabsorbierenden Elemente, deren Format ganz individuell gestaltet werden kann und die auf Stoff oder direkt auf Polyesterfasern gedruckt werden, können jeden Raum verschönern. Die gleiche Drucktechnologie ermöglicht auf Anfrage auch hochauflösende Bilder.



Gold - Black 1 Aspect ratio 2:1



Gold - Black 2 Aspect ratio 2:1



Gold - Black 3 Aspect ratio 2:1



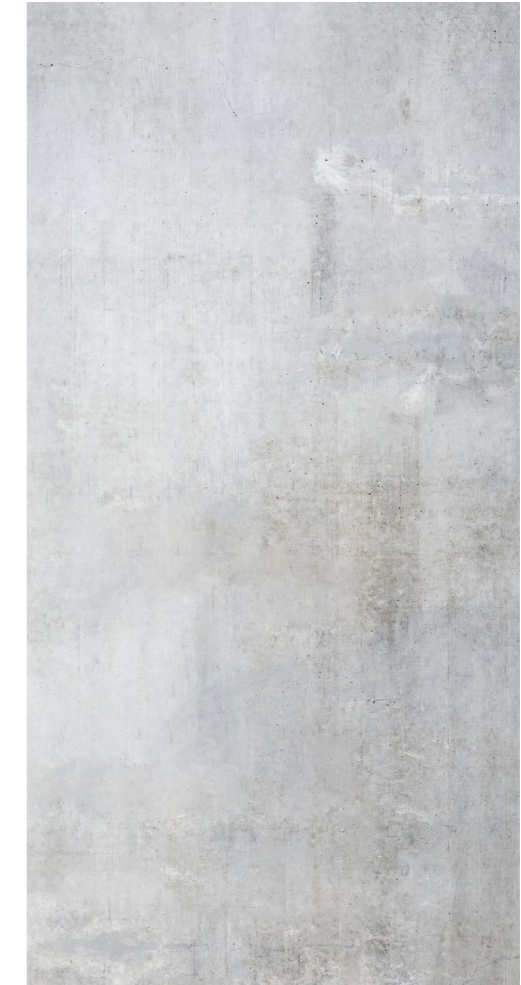
Gold - Blue 1 Aspect ratio 2:1



Gold - Blue 2 Aspect ratio 2:1



Natural - White Aspect ratio 2:1



Cemento liscio Aspect ratio 2:1



Gold - Color Aspect ratio 2:1



Gold - Green Aspect ratio 2:1

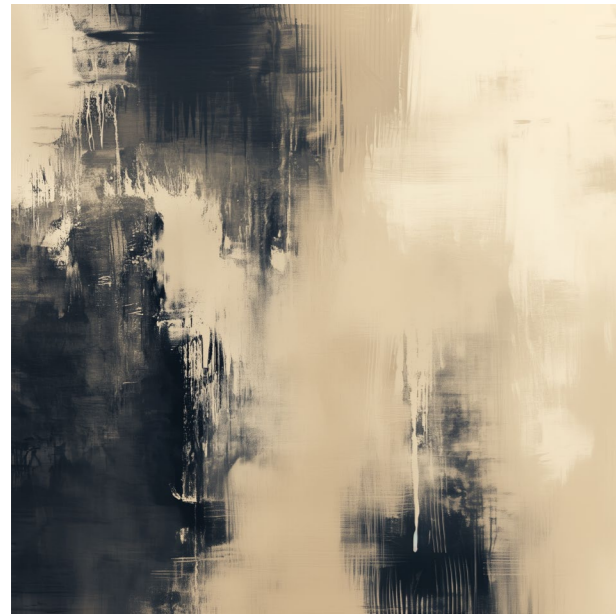


Cemento stonalizzato Aspect ratio 2:1

# ABSTRACT GRAPHICS

*stampa grafica*

Surface® / Area™ collection



GP 0033 - Aspect ratio 1:1



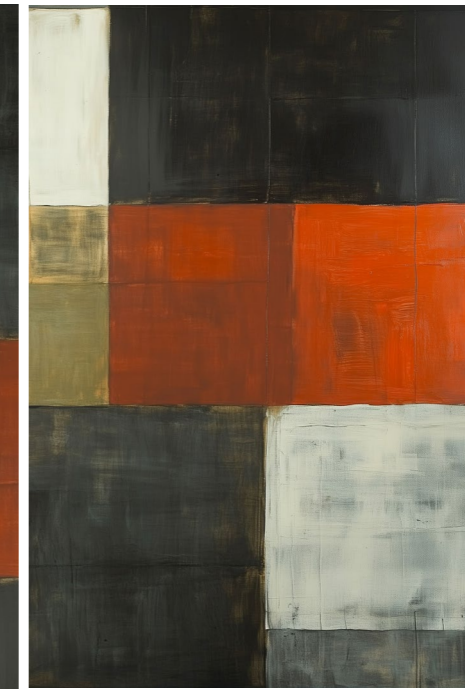
GP 0034 - Aspect ratio 1:2



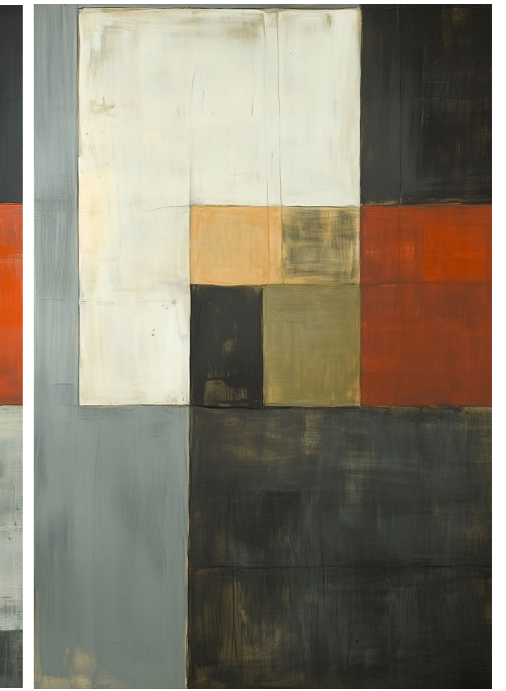
GP 0035 - Aspect ratio 1:2



GP 0039 - Aspect ratio 2:3



GP 0040 - Aspect ratio 2:3



GP 0041 - Aspect ratio 2:3



GP 0036 - Aspect ratio 2:3



GP 0037 - Aspect ratio 2:3



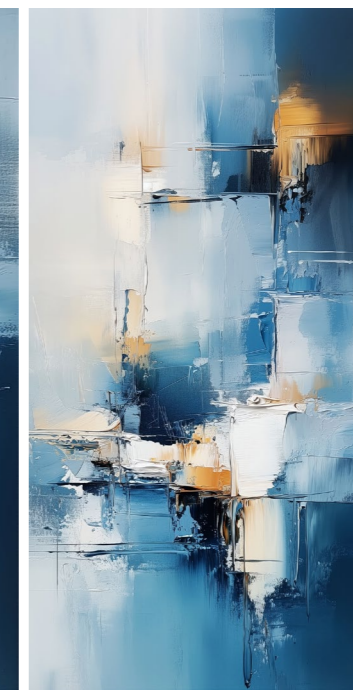
GP 0038 - Aspect ratio 2:3



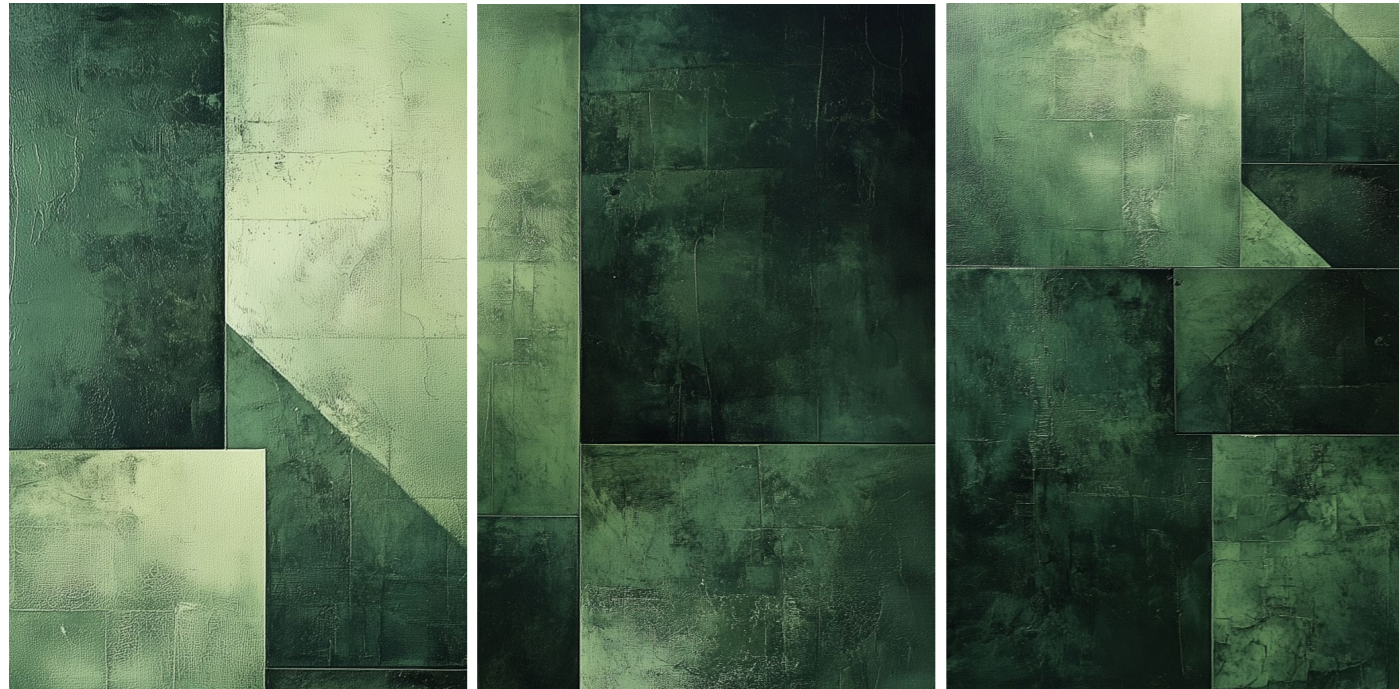
GP 0042 - Aspect ratio 1:2



GP 0043 - Aspect ratio 1:2



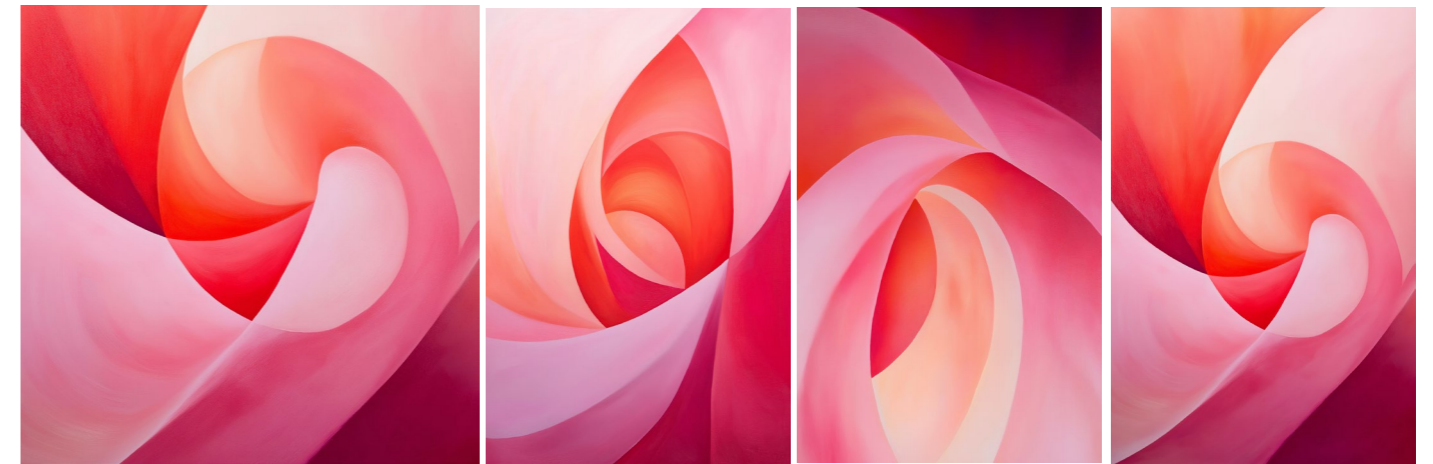
GP 0044 - Aspect ratio 1:2



GP 0045 - Aspect ratio 2:3

GP 0046 - Aspect ratio 2:3

GP 0047 - Aspect ratio 2:3



GP 0052 - Aspect ratio 1:1

GP 0053 - Aspect ratio 2:3

GP 0054 - Aspect ratio 2:3

GP 0055 - Aspect ratio 2:3



GP 0048 - Aspect ratio 2:3

GP 0049 - Aspect ratio 2:3

GP 0050 - Aspect ratio 2:3

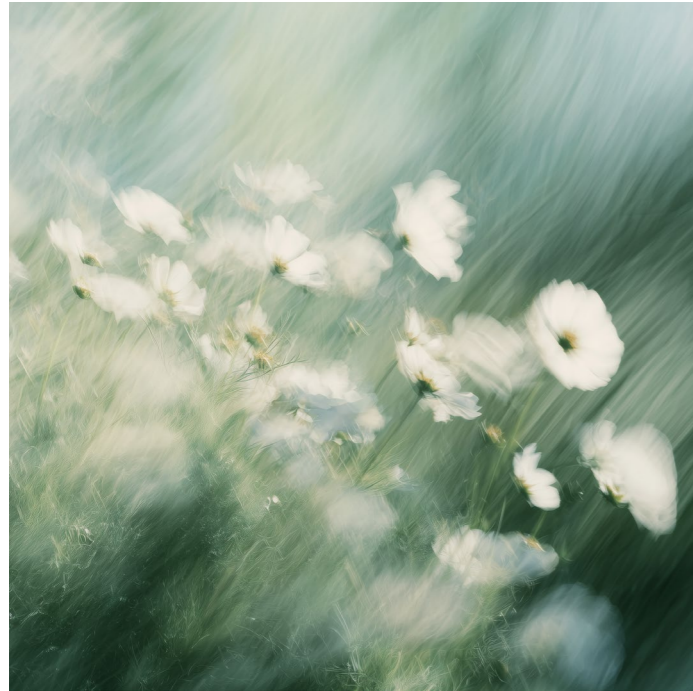
GP 0051 - Aspect ratio 2:3



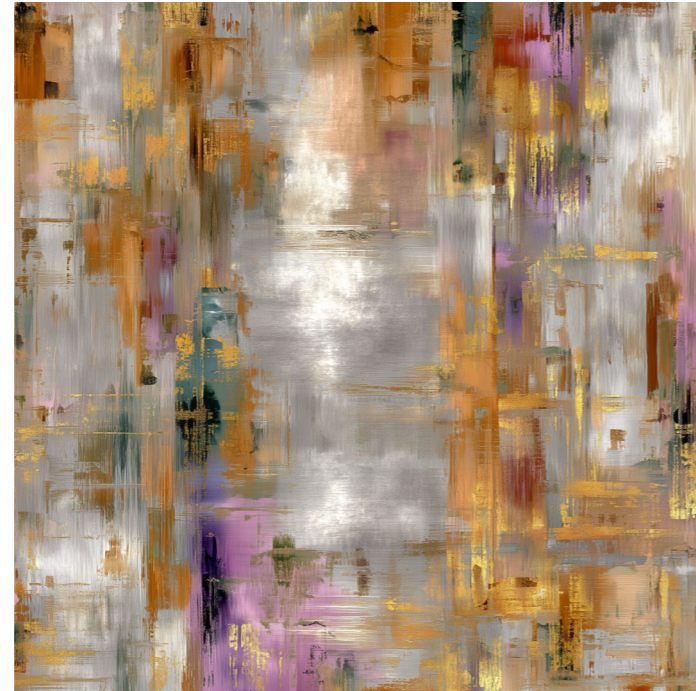
GP 0056 - Aspect ratio 1:1

GP 0057 - Aspect ratio 1:1

GP 0058 - Aspect ratio 1:1



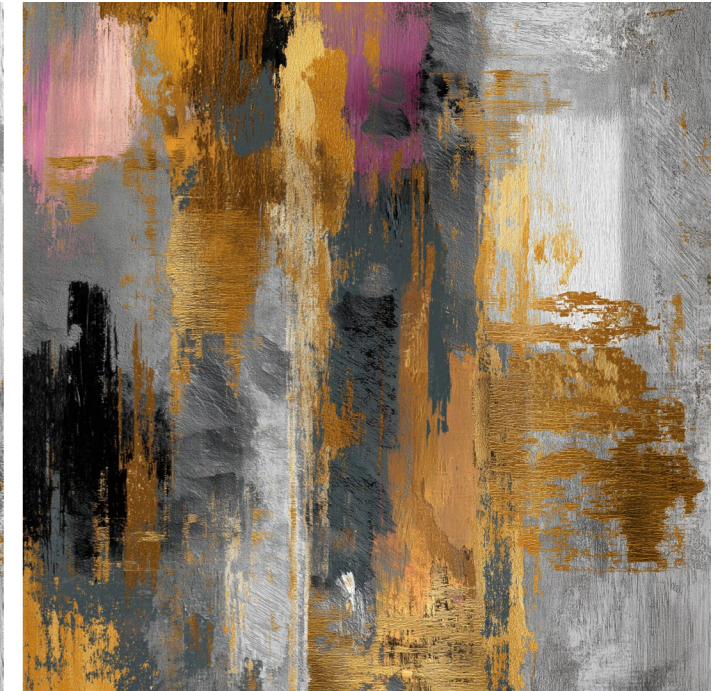
GP 0059 - Aspect ratio 1:1



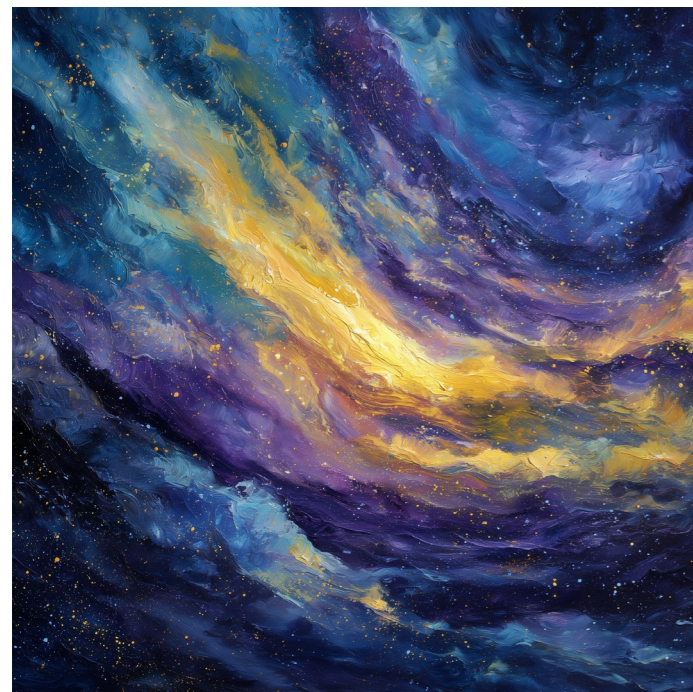
GP 0060 - Aspect ratio 1:1



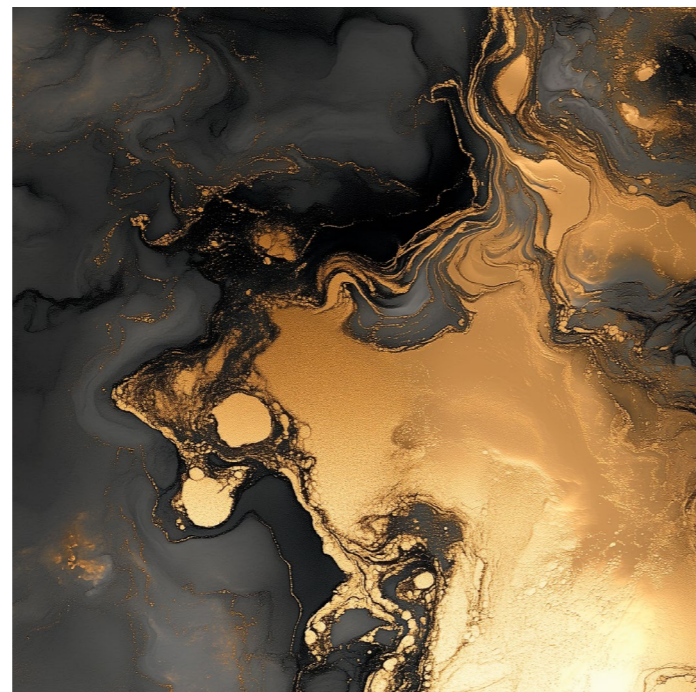
GP 0063 - Aspect ratio 1:1



GP 0064 - Aspect ratio 1:1



GP 0061 - Aspect ratio 1:1



GP 0062 - Aspect ratio 1:1



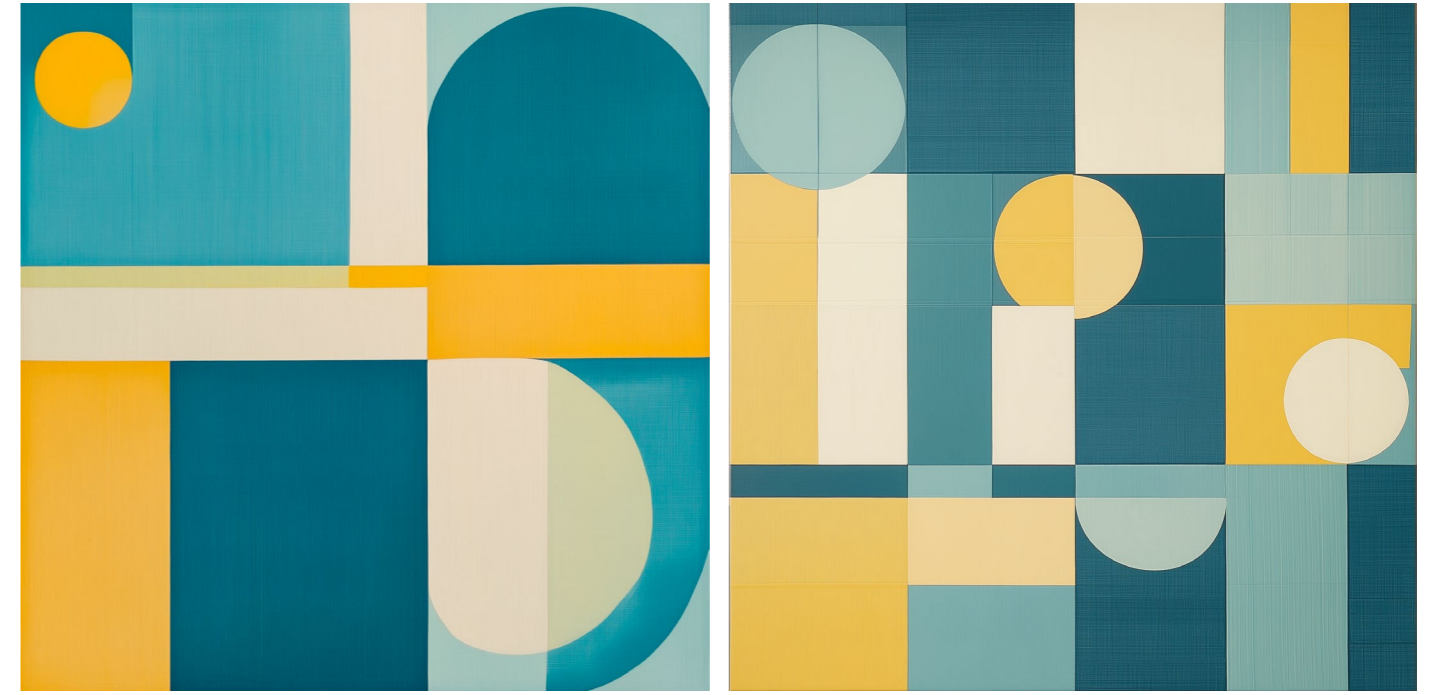
GP 0065 - Aspect ratio 1:1



GP 0066 - Aspect ratio 1:1

GP 0067 - Aspect ratio 1:1

GP 0068 - Aspect ratio 1:1

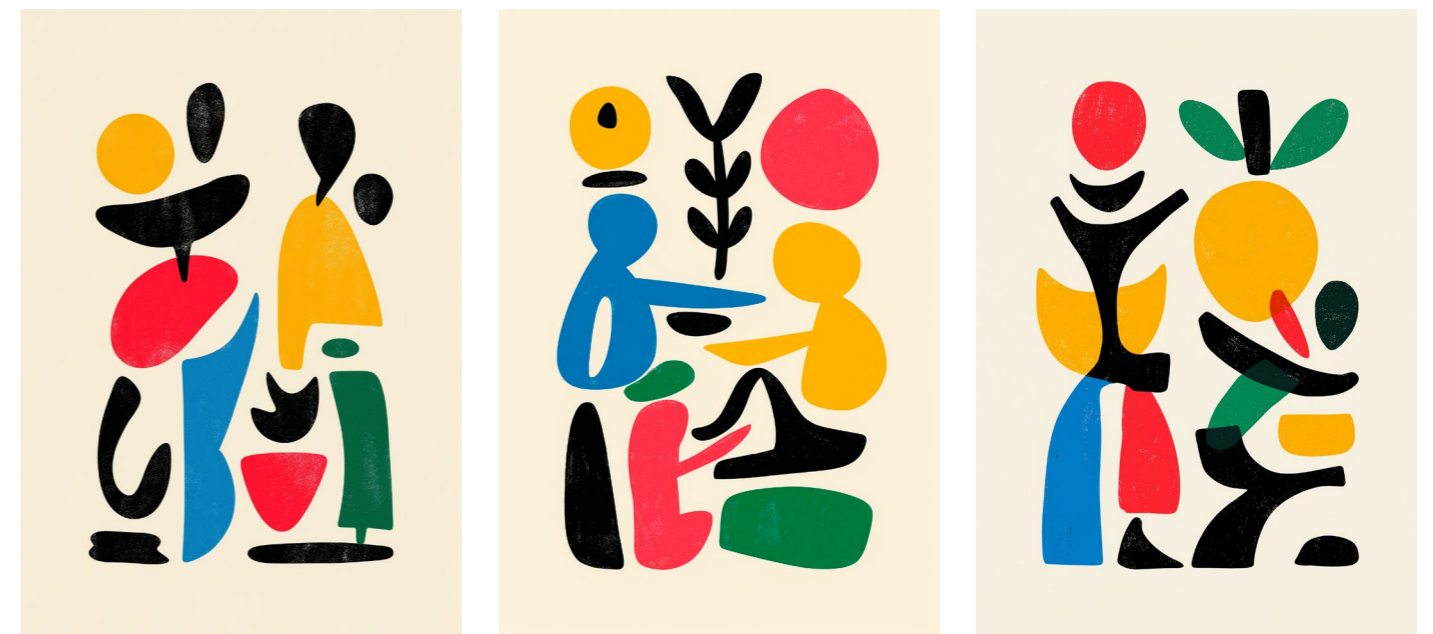


GP 0070 - Aspect ratio 1:1

GP 0071 - Aspect ratio 1:1



GP 0069 - Aspect ratio 1:1



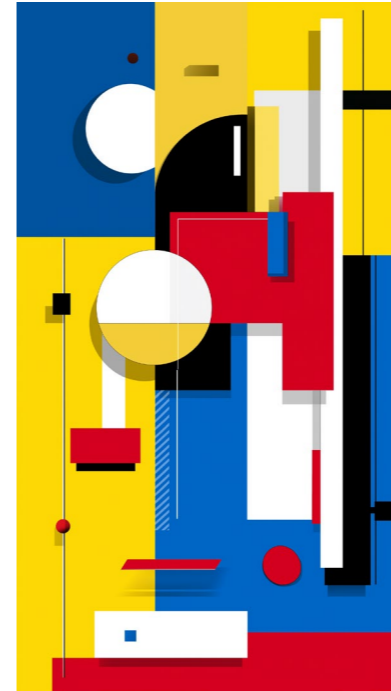
GP 0072 - Aspect ratio 2:3

GP 0073 - Aspect ratio 2:3

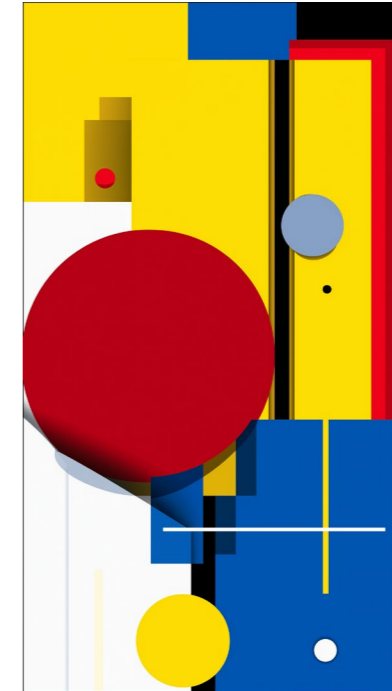
GP 0074 - Aspect ratio 2:3



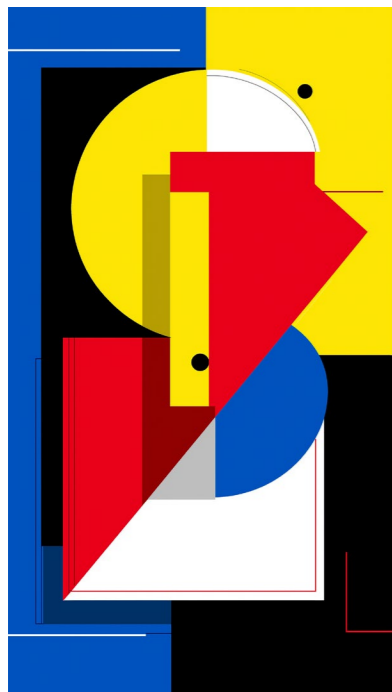
GP 0075 - Aspect ratio 1:1



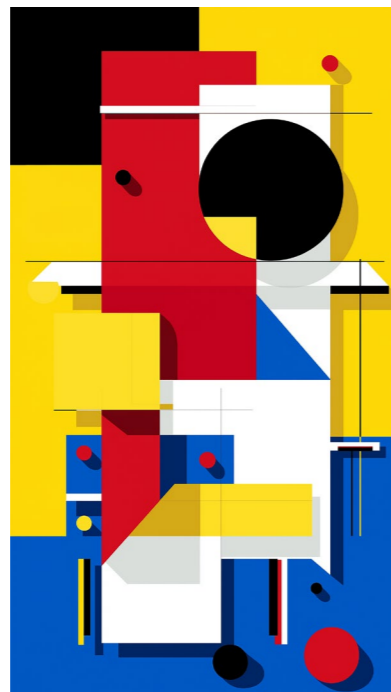
GP 0078 - Aspect ratio 5:9



GP 0079 - Aspect ratio 5:9



GP 0076 - Aspect ratio 5:9



GP 0077 - Aspect ratio 5:9

Garvan Acoustic S.R.L. owns the Garvan Acoustic Wellness brand and all the models in this catalogue. Garvan Acoustic S.R.L. reserves the right to make technical and dimensional changes and to introduce improvements that could change the aesthetics of the products in this catalogue. The printed colour references are not binding.

Garvan Acoustic S.R.L. è proprietaria del marchio Garvan Acoustic Wellness e di tutti i modelli presenti all' interno del catalogo. Garvan Acoustic S.R.L. si riserva il diritto di apportare modifiche tecniche, dimensionali e di introdurre miglioramenti che potrebbero cambiare l'estetica dei prodotti presentati in catalogo. I riferimenti colore stampati non sono vincolanti.

Garvan Acoustic S.R.L. est propriétaire de la marque Garvan Acoustic Wellness et de tous les modèles présentés dans ce catalogue. Garvan Acoustic S.R.L. se réserve le droit de procéder à des modifications techniques et dimensionnelles et d'introduire des améliorations susceptibles de modifier l'esthétique des produits présentés dans ce catalogue. Les références de couleurs imprimées ne sont pas contractuelles.

Garvan Acoustic S.R.L. besitzt die Marke Garvan Acoustic Wellness und alle im Katalog vorgestellten Produkte. Garvan Acoustic S.R.L. behält sich das Recht vor, technische und maßliche Änderungen sowie Verbesserungen vorzunehmen, die die Ästhetik der im Katalog vorgestellten Produkte verändern könnten. Die aufgedruckten Farbangaben sind unverbindlich.



Via Vittori, 21/1-2  
48018 Faenza (Ra) Italy  
Tel. +39 (0546) 682097  
garvan@garvanacoustic.com  
OFFICIAL 3+1+1 YEAR WARRANTY

Follow us on:



[www.garvanacoustic.com](http://www.garvanacoustic.com)