



SURFACE[®]

acoustic walls
patented design

Version: 1.4

design by Arkimera

EN *Surface™ sound absorbing panel is an acoustic coating inspired by slabs for the cladding of large buildings. One of our goals was to go beyond the offer of a common fabric finish, to develop lines of panels conveying an exclusive material effect. The Surface™ collection is therefore available in the special Materica CEMENT™ finish with a concrete effect. The Materica CEMENT™ finish is the result of an in-depth research activity on polyester fibre and its possibilities of combination with other elements that do not alter its sound absorption capacity. Surface™ is also available in NCS paintings or high resolution graphic printing. Moreover, the panel can be combined with fabrics, to create the perfect solution for any need.*

IT *Il pannello fonoassorbente SURFACE™ è un rivestimento acustico ispirato alle lastre per i rivestimenti edili in grandi formati. Uno dei nostri obiettivi era sviluppare delle linee di pannelli che avessero una sensazione materica invece della sola finitura in tessuto. La collezione Surface™ è disponibile quindi nella speciale finitura Materica CEMENT™ ad effetto cemento. La finitura Materica CEMENT™ nasce da un'approfondita attività di ricerca sulla fibra di poliestere e sulle sue possibilità di essere abbinata ad altri elementi che non ne alterassero le capacità di assorbimento acustico. Surface™ è inoltre disponibile in verniciature con NCS o con stampa grafica in alta risoluzione. Il pannello può essere inoltre accoppiato a tessuti, per offrire la soluzione perfetta per qualsiasi esigenza.*

FR *Le panneau acoustique SURFACE™ est un revêtement acoustique inspiré des dalles pour le bardage de bâtiments de grand format. L'un de nos objectifs était de développer des lignes de panneaux acoustiques qui offraient une sensation de matière plutôt que simplement la finition du tissu. La collection Surface™ est donc disponible dans la finition spéciale Materica CEMENT™ à effet béton. La finition Materica CEMENT™ est le résultat d'une recherche approfondie sur la fibre polyester et ses possibilités de combinaison avec d'autres éléments qui n'altèrent pas sa capacité d'absorption acoustique. Surface™ est aussi disponible avec peinture NCS ou impression graphique en haute résolution. Le panneau acoustique peut être également combiné avec des tissus, pour offrir la solution parfaite à tout besoin.*

DE *Akustisches Paneel SURFACE™ ist eine akustische Verzierung, die von den Latten für Bauverkleidungen in großen Formaten inspiriert ist. Eines unserer Ziele war es, eine Linie von Paneelen mit sowohl einer Stoffbeschichtung als auch mit einem stärkeren, materiellen Gefühl zu entwickeln. Die Kollektion Surface™ ist daher in der speziellen Verzierung Materica CEMENT™ mit Betoneffekt erhältlich. Die Materica CEMENT™ ist das Ergebnis einer eingehenden Forschungstätigkeit zu Polyesterfaser und zu den Möglichkeiten, Polyesterfaser mit anderen Elementen zu kombinieren, welche die schalldämmenden Qualitäten des Materials nicht ändern. Surface™ ist auch mit Lackierung in den NCS-Farben oder mit hochauflösendem Grafikdesign erhältlich. Das Paneel kann auch mit Stoffen kombiniert werden, um die beste Lösung für jede Anforderung zu bieten.*





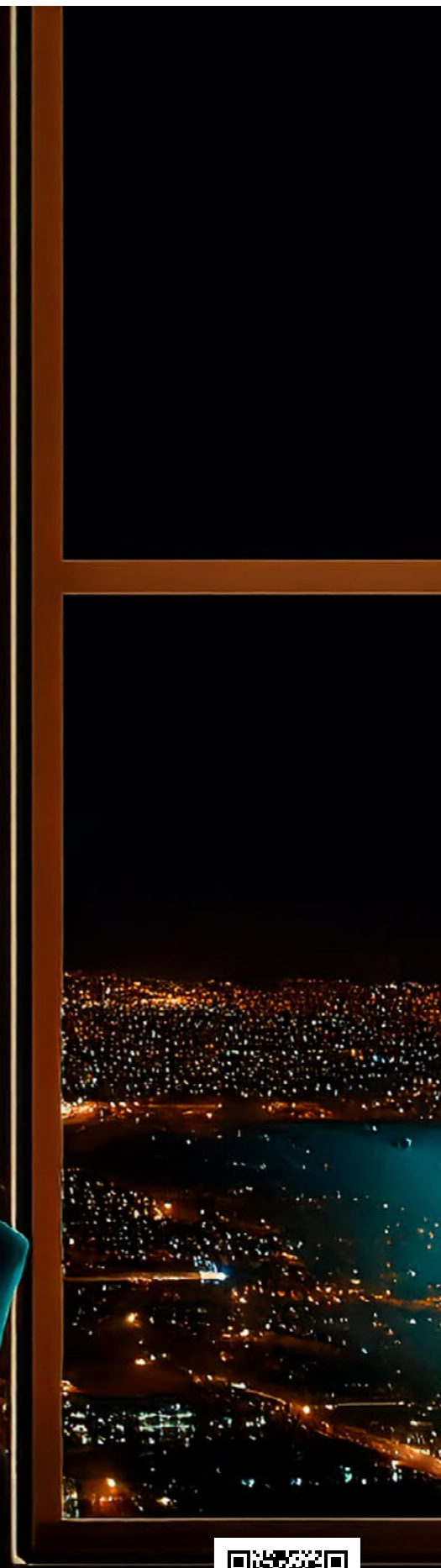
SURFACE®
various sizes, Materica™ finish



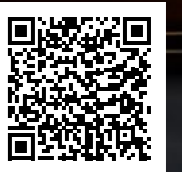
SURFACE®
black fiber with Abstract graphic print



SURFACE®
various sizes, Materica™ finish



SURFACE®
black fiber with Abstract graphic print
frame not included





SURFACE®
square shape, Materica™ finish



SURFACE®
*black fiber with Abstract graphic print
frame not included*



SURFACE®
various sizes, Materica™ finish



SURFACE®
square shape, black fiber with Abstract graphic print



SURFACE®
various sizes, Materica™ finish



SURFACE®
various sizes, black fiber with Abstract graphic print



SURFACE®
various sizes, Materica™ finish





SURFACE®
various sizes, Materica™ finish





SURFACE®
black fiber with Abstract graphic print
frame not included



*SURFACE®
size 120x120 black fiber with Marble graphic print*





SURFACE®
various sizes, Materica™ finish



SURFACE®
black fiber with Abstract graphic print





SURFACE®
various sizes, Materica™ finish



SURFACE®
black fiber with Abstract graphic print
frame not included



SURFACE®
various sizes, black fiber with Abstract graphic print

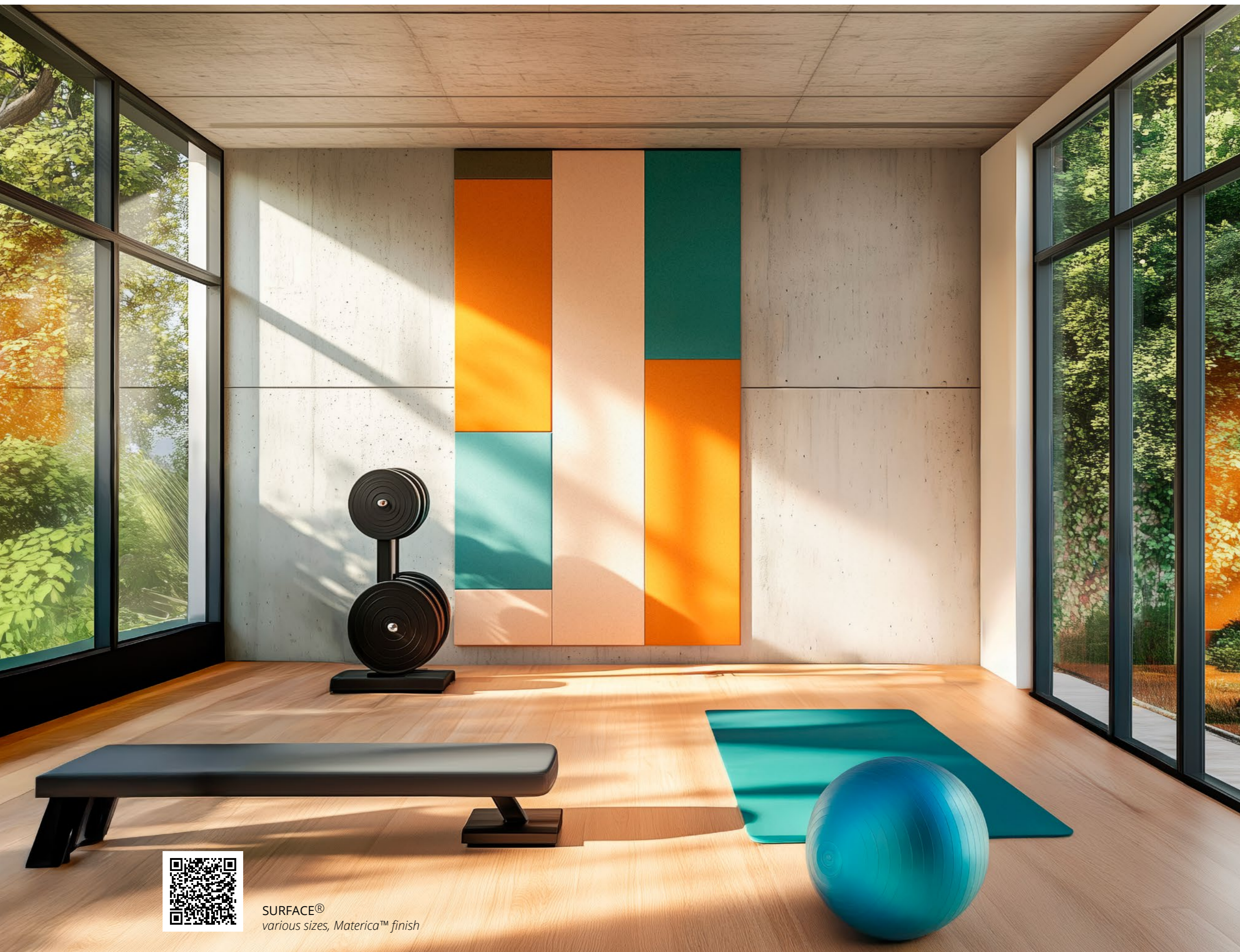




SURFACE®
various sizes, Materica™ finish







SURFACE®
various sizes, Materica™ finish



SURFACE®
various sizes, Materica™ finish





SURFACE®
black fiber with
Abstract graphic print




DIAMOND
LUXURY SHOES STORE





SURFACE®
various sizes, Materica™ finish





SURFACE®
various sizes, Materica™ finish





Silence Catalogue
ARTWORKS ON SOUND-ABSORBING PANELS
Artist: Adriano Venturilli



SURFACE®
graphic print
Artist Maria Savini



SURFACE®
circle shape, black fiber with Abstract graphic print





SURFACE®
black fiber with Abstract graphic print



Your Photos, Your Acoustic Panels

- EN *Turn sound into image: we can print your photos on acoustic panels, creating walls that tell your story and enhance the sound quality.*
- IT *Trasforma il suono in immagine: possiamo stampare le tue foto su pannelli fonoassorbenti, creando pareti che raccontano la tua storia e migliorano l'acustica.*
- FR *Transformez le son en image : nous pouvons imprimer vos photos sur des panneaux acoustiques, pour créer des murs qui racontent votre histoire et améliorent l'acoustique.*
- DE *Verwandeln Sie Klang in Bild: wir drucken Ihre Fotos auf Schallschutzpaneele und schaffen Wände, die Ihre Geschichte erzählen und die Akustik verbessern.*





design by Arkimera

EN *The allure and brightness of an open space, without sacrificing the silence and discretion of a room. In this desk version, the minimal design and Materica CEMENT™ finishes of the SURFACE™ collection guarantee acoustic comfort and a delightful look for a pleasantly efficient work area. Shaped with orthogonal or oblique cuts, and custom sizes, the panel is supported by small steel brackets (available in RAL colours) that can be fixed to a work surface or left re-positionable, guaranteeing modularity for co-working and versatile spaces. Also available in a free standing version.*

IT *Fascino e luminosità dell'open space senza rinunciare a silenziosità e discrezione degli ambienti. In questa variante desk il design minimal e le finiture Materica CEMENT™ della collezione SURFACE™ garantiscono comfort acustico e gradevolezza visiva per un area lavoro piacevolmente efficiente. Sagomato con tagli ortogonali od obliqui e in formati totalmente custom, il pannello è sorretto da piccole staffe in acciaio (disponibili nei colori RAL) che possono essere fissate al piano di lavoro o lasciate riposizionabili, garantendo la modularità richiesta dagli ambienti di coworking. Disponibile anche la variante free standing.*

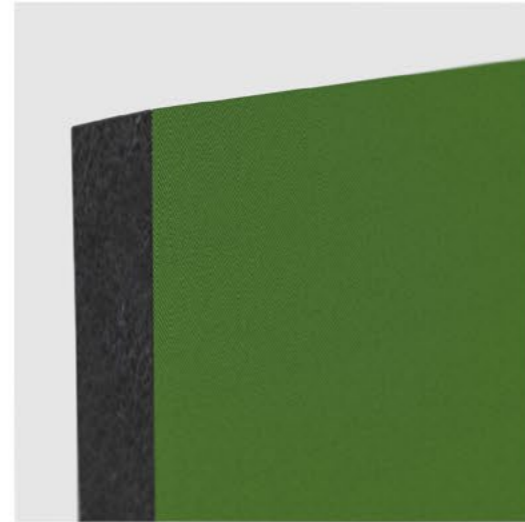
FR *Charme et luminosité de l'open space sans renoncer au silence et à la discrétion des ambiances. Dans cette variante desk, le design minimal et les finitions Materica CEMENT™ de la collection SURFACE™ garantissent un confort acoustique et un agrément visuel pour un espace de travail d'une plaisante efficacité. Façonné avec des découpes orthogonales ou obliques et dans des formats totalement personnalisés, le panneau est soutenu par de petits étriers en acier (disponibles dans les couleurs RAL) qui peuvent être fixés sur le plan de travail ou laissés repositionnables, garantissant la modularité requise par les espaces de travail partagé. Une variante sur pied est également disponible.*

DE *Charme und Helligkeit des offenen Raumes, ohne auf Ruhe und Diskretion zu verzichten. Das minimalistische Design und das Finish Materica CEMENT™ der Kollektion SURFACE™ garantieren in dieser Variante akustischen Komfort und eine ansprechende Optik für einen angenehm funktionalen Arbeitsbereich. Das Paneel, das in rechteckiger oder schräger Ausführung sowie in Formaten ganz nach Maß erhältlich ist, ruht auf kleinen Stahlwinkeln (in RAL-Farben erhältlich), die an der Arbeitsplatte befestigt oder frei verschoben werden können, um die für Coworking-Umgebungen erforderliche Modularität zu gewährleisten. Eine freistehende Version ist ebenfalls erhältlich.*



SURFACE®
custom size
Materica™ finish

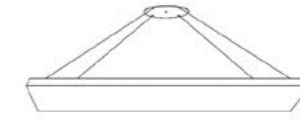




FIXING SYSTEMS



magnet mounting (with security leash)



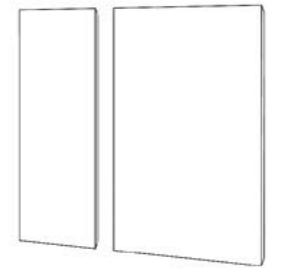
1-point ceiling suspended



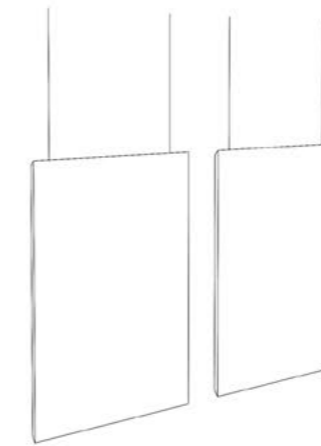
ceiling fixed with glue



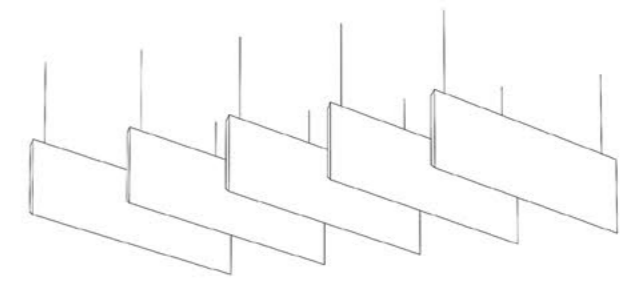
4-point ceiling suspended



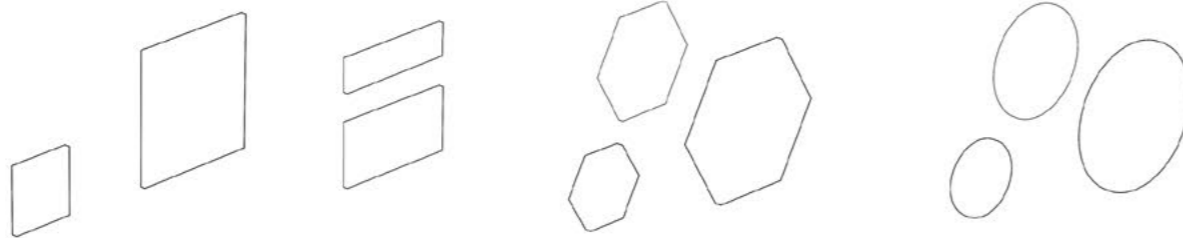
wall fixed with bracket or glue



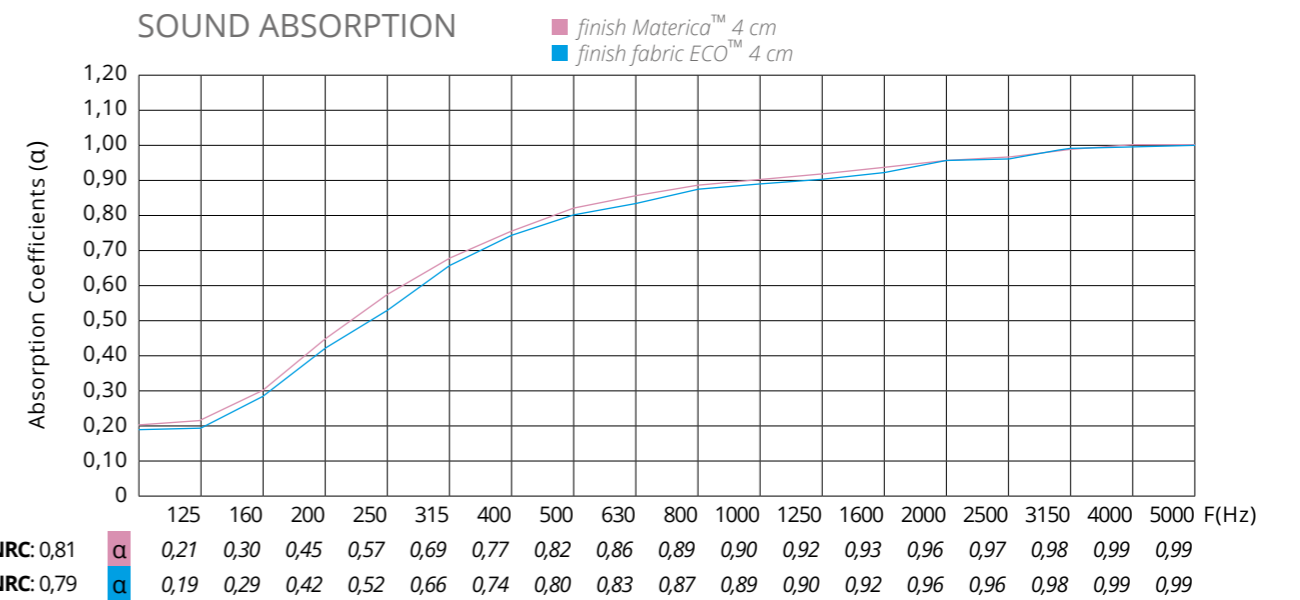
suspended partition



suspended baffle



SOUND ABSORPTION



Materica™

patented design

wall / cement-like finish
finitura effetto muro / cemento

Microbaffle® /Parquet®
Surface® collection

EN A finish that we developed and tested in our reverberation room, which gives our surfaces a more substantial appearance similar to concrete or wall, while maintaining the sound-absorbing properties of the support material. The effect is achieved thanks to the components used and the special handcraft that makes each surface unique and different from the others.

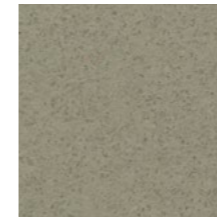
IT Finitura da noi sviluppata e testata nella nostra camera riverberante che conferisce alle nostre superfici un aspetto materico simile al cemento o muro, mantenendo le proprietà fonoassorbenti del materiale di supporto. L'effetto è realizzato grazie ai componenti utilizzati e alla speciale lavorazione manuale che rende ogni superficie diversa dall'altra.

FR Une finition que nous avons développée et testée dans notre chambre de réverbération, qui donne à nos surfaces un aspect semblable au béton ou mur, tout en conservant les propriétés d'absorption acoustique du matériau de support. L'effet est obtenu grâce aux composants utilisés et au traitement manuel spécial qui rend chaque surface unique et différente.

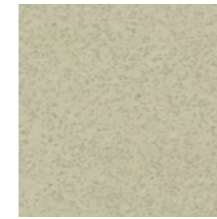
DE Eine Verzierung, die wir in unserem Nachhallraum entwickelt und getestet haben und die unseren Oberflächen ein stärker betonähnliches oder Wand Aussehen verleiht und gleichzeitig die schallabsorbierenden Eigenschaften des Trägermaterials beibehält. Der Effekt wird dank der verwendeten Komponenten und der speziellen Handarbeit erzielt, die jede Oberfläche einzigartig macht.

Materica WALL™

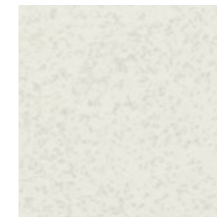
Gray Shades
on White fiber



MC31



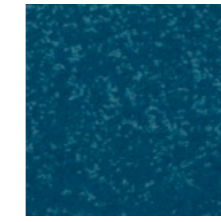
MC32



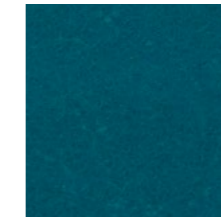
MC33

Materica WALL™

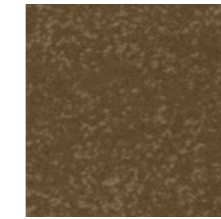
Colour Shades
on White fiber



MC51



MC52



MC53



MC54



MC55



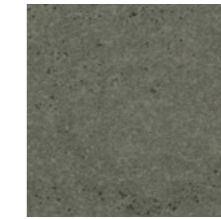
MC56

Materica CEMENT™

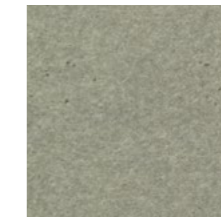
Gray Shades
on Black fiber



MC11



MC12



MC13



MC14

Custom colours



MC
on white fiber or
black fiber

EN In addition to the colours available, it is possible to request custom colours. The colours shown are purely indicative.

IT Oltre alle colorazioni disponibili è possibile produrre colorazioni su richiesta. I colori riportati sono indicativi.

FR En plus des couleurs disponibles, il est possible de demander des couleurs personnalisés. Les couleurs présentées sont indicatives.

DE Zusätzlich zu den verfügbaren Farben ist es möglich, auf Anfrage Farben herzustellen. Die angeführten Farben gelten lediglich als Beispiel.

ECO fabric / tessuto

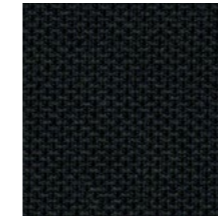
Microbaffle® /Parquet®
Surface® / Atelier®
collection

EN An environmentally friendly knit fabric made from 100% yarn resulting from the reuse of plastic bottles. Eco is naturally unravelable, it is a compact technical fabric with a slightly three-dimensional appearance typical of jersey.

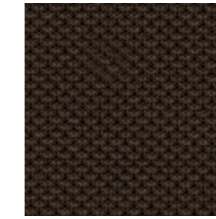
IT Tessuto a maglia environmentalmente-friendly realizzato con il 100% da filato derivante dal riuso di bottiglie in plastica. Eco risulta indemagliabile per sua natura, si presenta come tessuto tecnico e compatto con aspetto leggermente tridimensionale tipico del jersey.

FR Tricot écologique, complètement fabriqué à partir de fil issu de la réutilisation de bouteilles en plastique. Eco est indémaillable, un tissu technique compact avec un aspect légèrement tridimensionnelle typique du jersey.

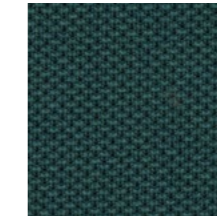
DE Umweltfreundliche Knitgewebe, Garn 100% aus der Wiederverwendung von Kunststoffflaschen. Eco ist maschenfest, ein kompakter technischer Stoff mit einem dreidimensionalen Stil, der typisch für Jersey ist.



TE01



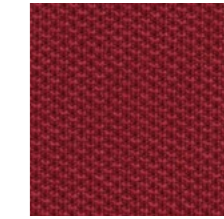
TE27



TE15



TE39



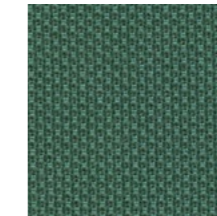
TE35



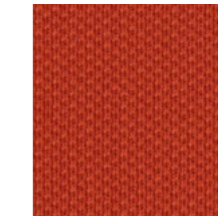
TE02



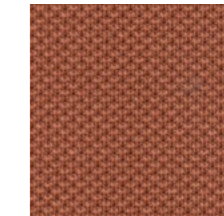
TE24



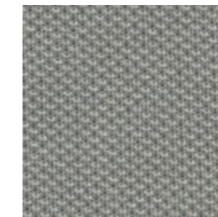
TE11



TE32



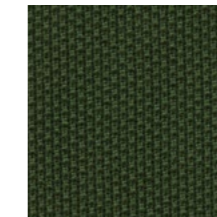
TE34



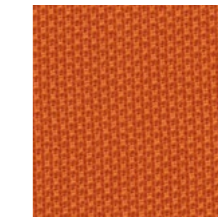
TE04



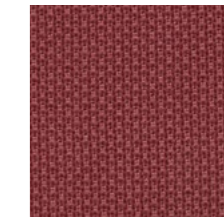
TE23



TE08



TE31



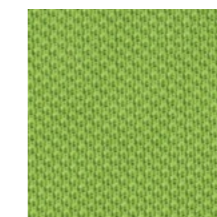
TE36



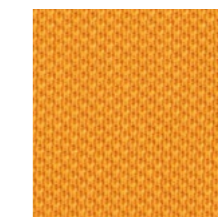
TE06



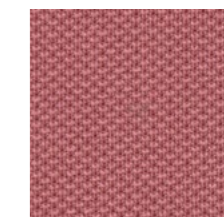
TE21



TE10



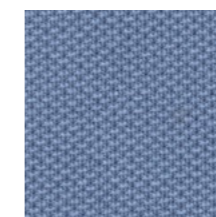
TE29



TE37



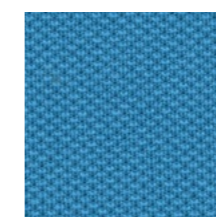
TE07



TE19



TE28



TE17

COMPOSITION: 100% Recycled Polyester
ABRASION RESISTANCE: UNI ISO 12947/2 100.000
FLAMMABILITY: EN1021/1-2 CRIB 5 BS 7176
Medium Hazard California TB117 UNI 9175 Class 1IM
OEKO-TEX STANDARD 100

EN The colours shown are purely indicative.

IT I colori riportati sono indicativi.

FR Les couleurs présentées sont indicatives.

DE Die angeführten Farben gelten lediglich als Beispiel.



GRAPHIC ART

stampa grafica

Surface® / Quadra®
collection

EN You can have prints of the artworks by Faenza-based artist Maria Savini on our acoustic panels. Her expressive and textured brushstrokes come to life on every surface, creating an immersive visual narrative that turns spaces and moments into unique experiences.

The cost is 10% higher than standard prints.

IT Puoi avere le stampe delle opere dell'artista faentina Maria Savini sui pannelli fonoassorbenti: i suoi tratti materici e impetuosi prendono vita su ogni superficie, creando una narrazione visiva avvolgente che trasforma ambienti e momenti in esperienze uniche.

Il costo è maggiorato del 10% rispetto alle stampe standard.

FR Vous pouvez obtenir des reproductions des œuvres de l'artiste faentine Maria Savini sur nos panneaux acoustiques. Ses coups de pinceau expressifs et texturés prennent vie sur chaque surface, créant une narration visuelle immersive qui transforme les espaces et les instants en expériences uniques.

Le coût est supérieur de 10% aux impressions standard.

DE Sie können Drucke der Werke der Künstlerin aus Faenza Maria Savini auf unseren Akustikpaneelen erhalten. Ihre materiellen und impulsiven Pinselstriche erwachen auf jeder Oberfläche zum Leben und schaffen eine eindrucksvolle visuelle Erzählung, die Räume und Momente in einzigartige Erlebnisse verwandelt.

Der Preis liegt 10% über dem der Standarddrucke.



Name: Sound Check size Ø90x4 cm



Name: Vibrazioni size Ø90x4 cm



Name: Sound Immersion Parte 1
size 60x120x4 cm



Name: Sound Immersion Parte 2
size 60x120x4 cm



Name: Logos
size 90x53x4 cm

MARBLE

stampa grafica

Surface® / Atelier® / Quadra®
collection

EN Marble veins embellished with gold veins, geological wonders that hint at incredible universes, iridescent liquids that float in the cosmos like notes in search of an impossible pentagram. The high-resolution prints of the MARBLE collection set sail from the plausible towards oceans of the unimaginable, with evocative, bewitching patterns, capable of surprising you at every turn. With custom sizes, printed on fabric or directly on polyester fibre, these sound-absorbing solutions will embellish any space or environment. The same printing technology allows the reproduction, on request, of any high-definition image you might want.

IT Venature marmoree impreziosite da filoni auriferi, meraviglie geologiche che abbracciano universi fantastici, liquidi iridescenti che fluttuano nel cosmo come note alla ricerca di un impossibile pentagramma. Le stampe ad alta risoluzione della collezione MARBLE salpano dal plausibile verso l'oceano dell'inimmaginabile: pattern evocativi, carichi di fascino e capaci di sorprendere. Completamente customizzabili nel formato, accoppiate alla stampa su tessuto o impresse direttamente su fibra di poliestere, queste soluzioni fonoassorbenti possono impreziosire ogni ambiente. Con la medesima tecnologia di stampa è inoltre possibile la riproduzione di immagini in alta definizione su richiesta del cliente.

FR Des veinures marmoréennes rehaussées de filons d'or, des merveilles géologiques qui embrassent des univers fantastiques, des liquides iridescents qui flottent dans le cosmos comme des notes à la recherche d'une impossible portée. Les gravures haute résolution de la collection MARBLE appareillent du plausible vers l'océan de l'inimaginable : motifs évocateurs, chargés de charme et capables de surprendre. Entièrement personnalisables dans leur format, associées à l'impression sur tissu ou imprimées directement sur fibre de polyester, ces solutions d'absorption acoustique peuvent enrichir n'importe quel environnement. Avec la même technologie d'impression, il est en outre possible de reproduire des images en haute définition à la demande du client.

DE Marmorierungen, die mit Goldfasern veredelt sind; geologische Wunderwerke, die sich zu fantastischen Unikaten zusammenfügen; schillernde Flüssigkeiten, die wie Noten durch den Kosmos schweben, auf der Suche nach einem Pentagramm, das nicht zu finden ist. Die hochauflösenden Drucke der Kollektion MARBLE verlassen den Bereich des Plausiblen und tauchen ein in den Ozean des Unvorstellbaren: ausdrucksstarke, faszinierende und überraschende Muster. Diese schallabsorbierenden Elemente, deren Format ganz individuell gestaltet werden kann und die auf Stoff oder direkt auf Polyesterfasern gedruckt werden, können jeden Raum verschönern. Die gleiche Drucktechnologie ermöglicht auf Anfrage auch hochauflösende Bilder.



Gold - Black 1 Aspect ratio 2:1



Gold - Black 2 Aspect ratio 2:1



Gold - Black 3 Aspect ratio 2:1



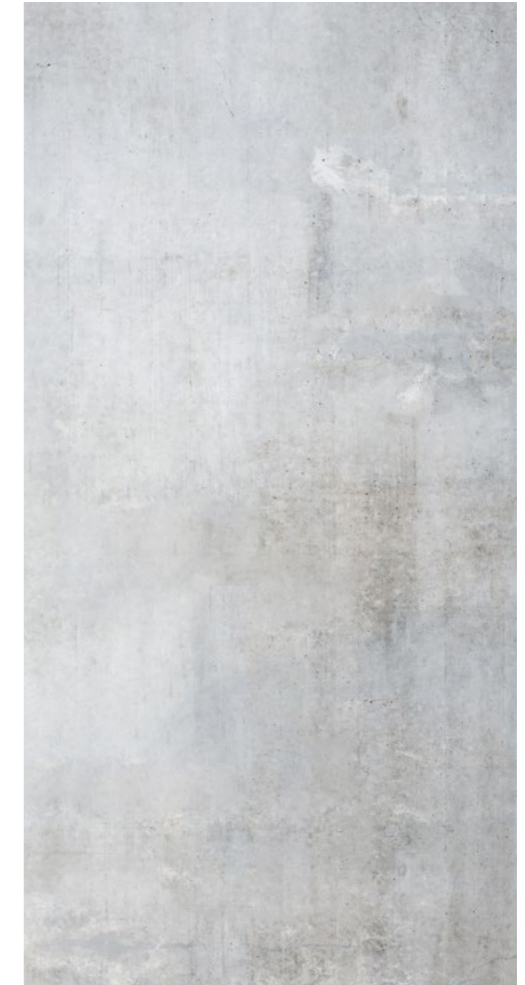
Gold - Blue 1 Aspect ratio 2:1



Gold - Blue 2 Aspect ratio 2:1



Natural - White Aspect ratio 2:1



Cemento liscio Aspect ratio 2:1



Gold - Color Aspect ratio 2:1



Gold - Green Aspect ratio 2:1

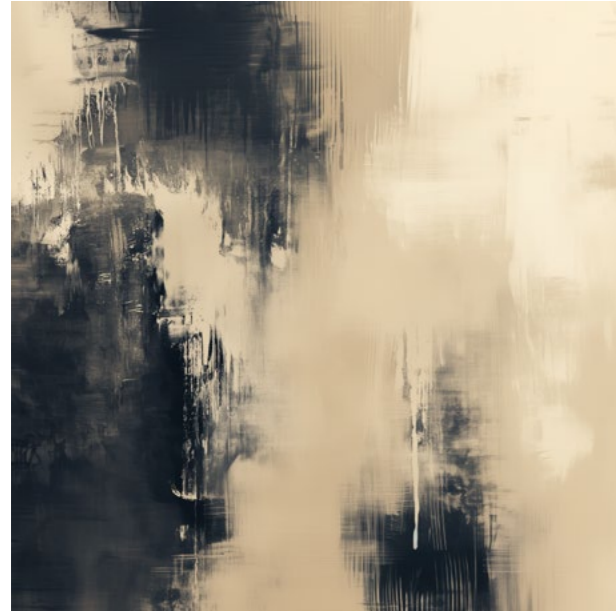


Cemento stonalizzato Aspect ratio 2:1

ABSTRACT GRAPHICS

stampa grafica

Surface® / Atelier® / Quadra® collection



GP 0033 - Aspect ratio 1:1



GP 0034 - Aspect ratio 1:2



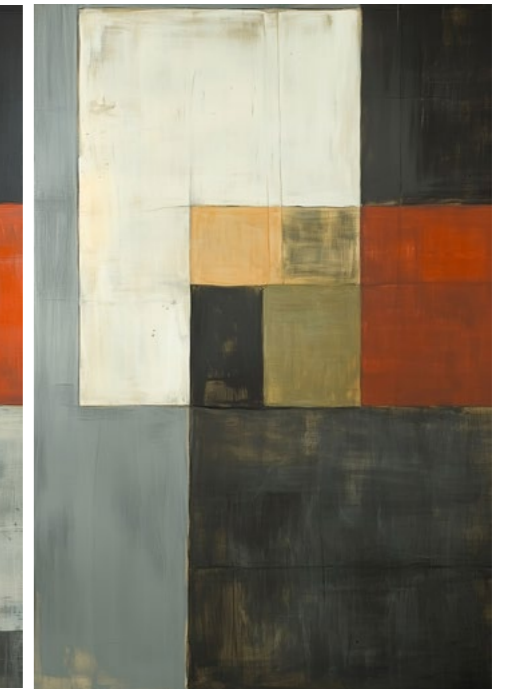
GP 0035 - Aspect ratio 1:2



GP 0039 - Aspect ratio 2:3



GP 0040 - Aspect ratio 2:3



GP 0041 - Aspect ratio 2:3



GP 0036 - Aspect ratio 2:3



GP 0037 - Aspect ratio 2:3



GP 0038 - Aspect ratio 2:3



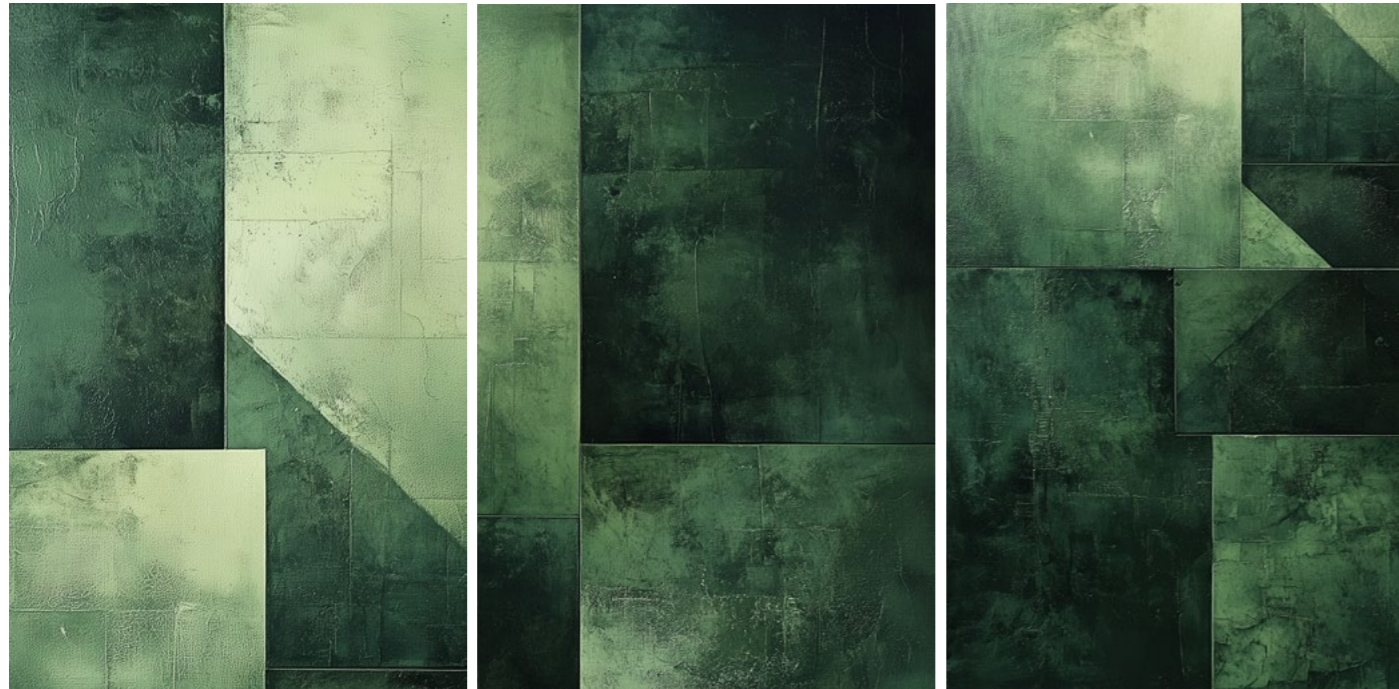
GP 0042 - Aspect ratio 1:2



GP 0043 - Aspect ratio 1:2



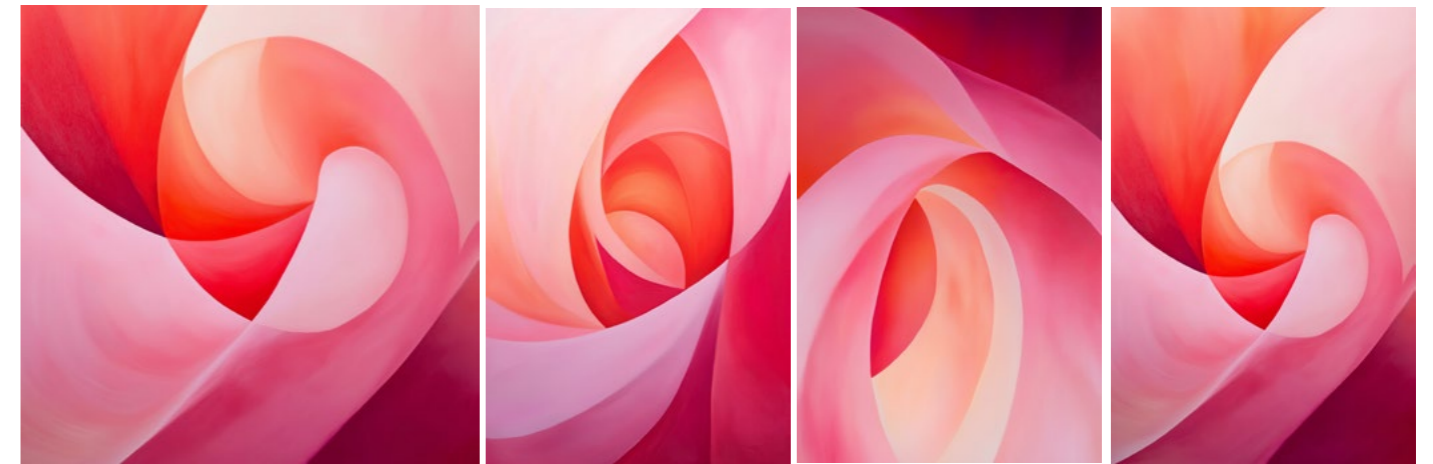
GP 0044 - Aspect ratio 1:2



GP 0045 - Aspect ratio 2:3

GP 0046 - Aspect ratio 2:3

GP 0047 - Aspect ratio 2:3



GP 0052 - Aspect ratio 1:1

GP 0053 - Aspect ratio 2:3

GP 0054 - Aspect ratio 2:3

GP 0055 - Aspect ratio 2:3



GP 0048 - Aspect ratio 2:3

GP 0049 - Aspect ratio 2:3

GP 0050 - Aspect ratio 2:3

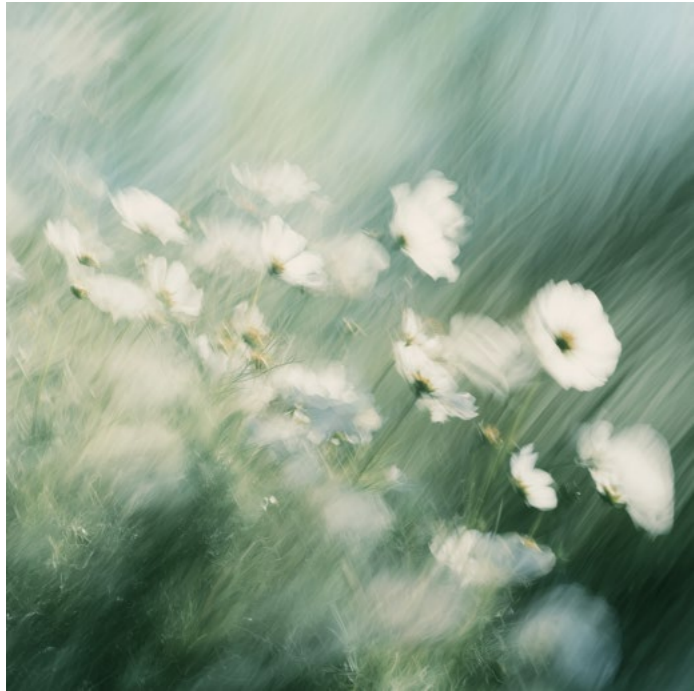
GP 0051 - Aspect ratio 2:3



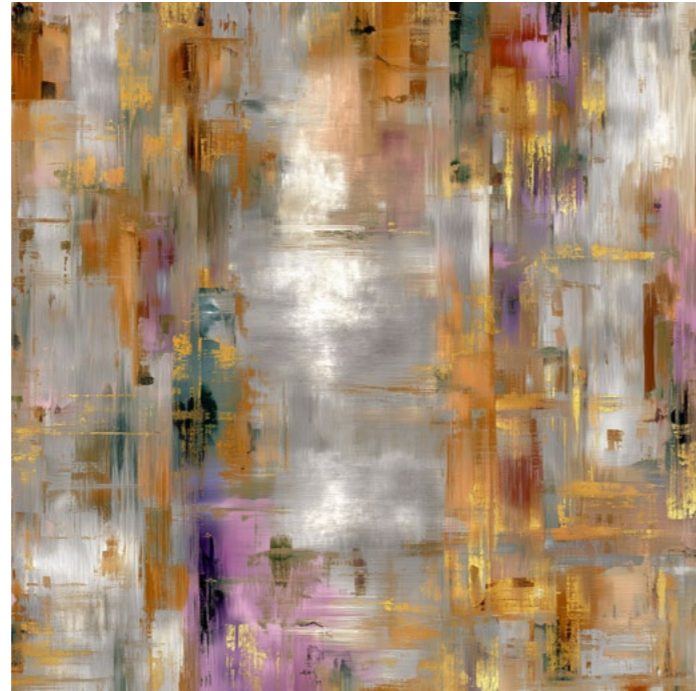
GP 0056 - Aspect ratio 1:1

GP 0057 - Aspect ratio 1:1

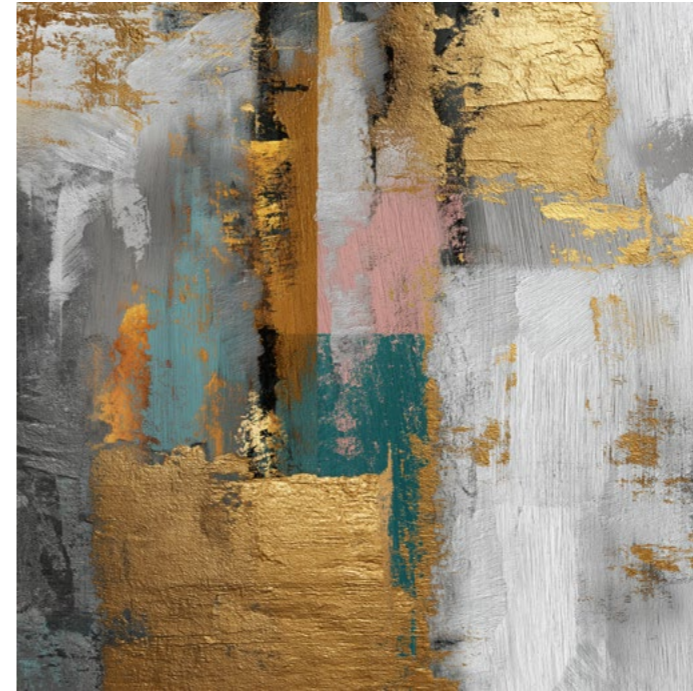
GP 0058 - Aspect ratio 1:1



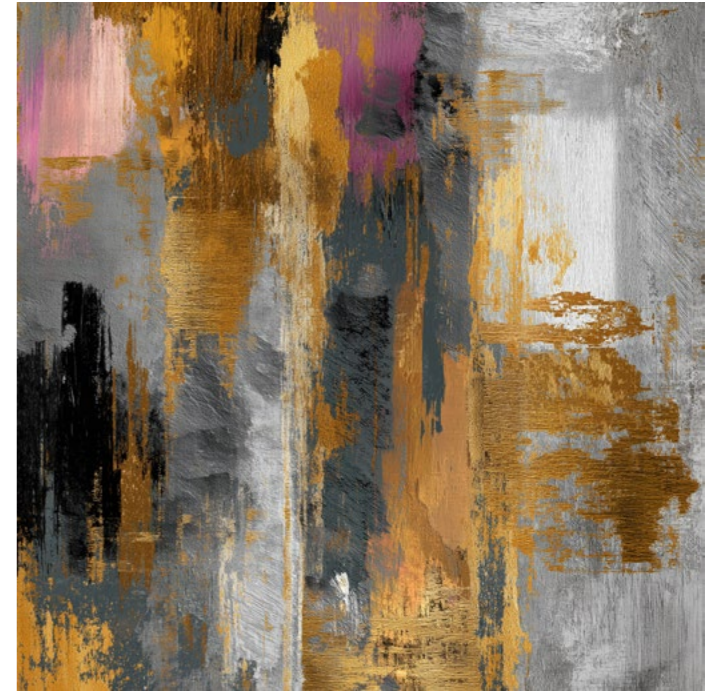
GP 0059 - Aspect ratio 1:1



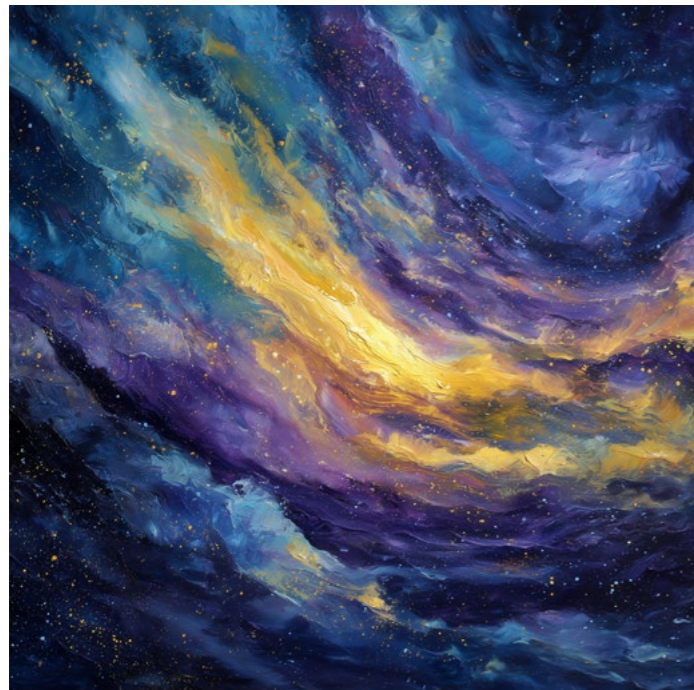
GP 0060 - Aspect ratio 1:1



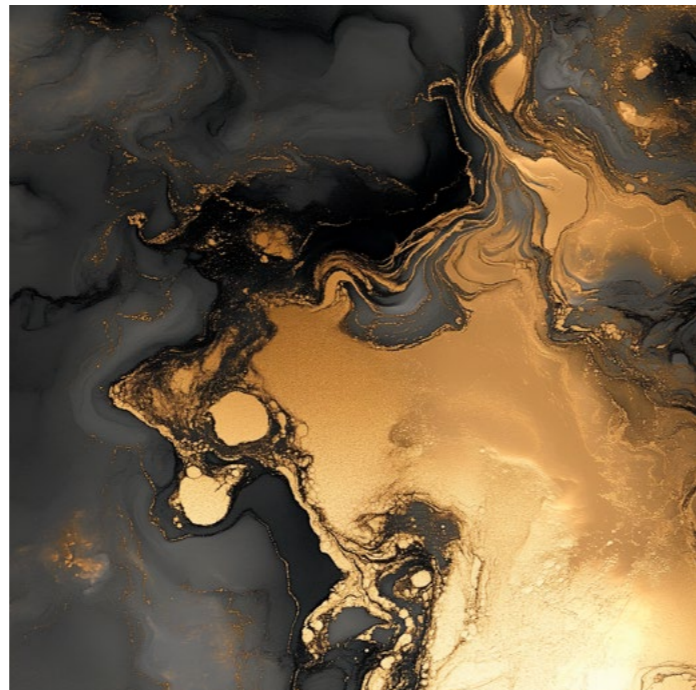
GP 0063 - Aspect ratio 1:1



GP 0064 - Aspect ratio 1:1



GP 0061 - Aspect ratio 1:1



GP 0062 - Aspect ratio 1:1



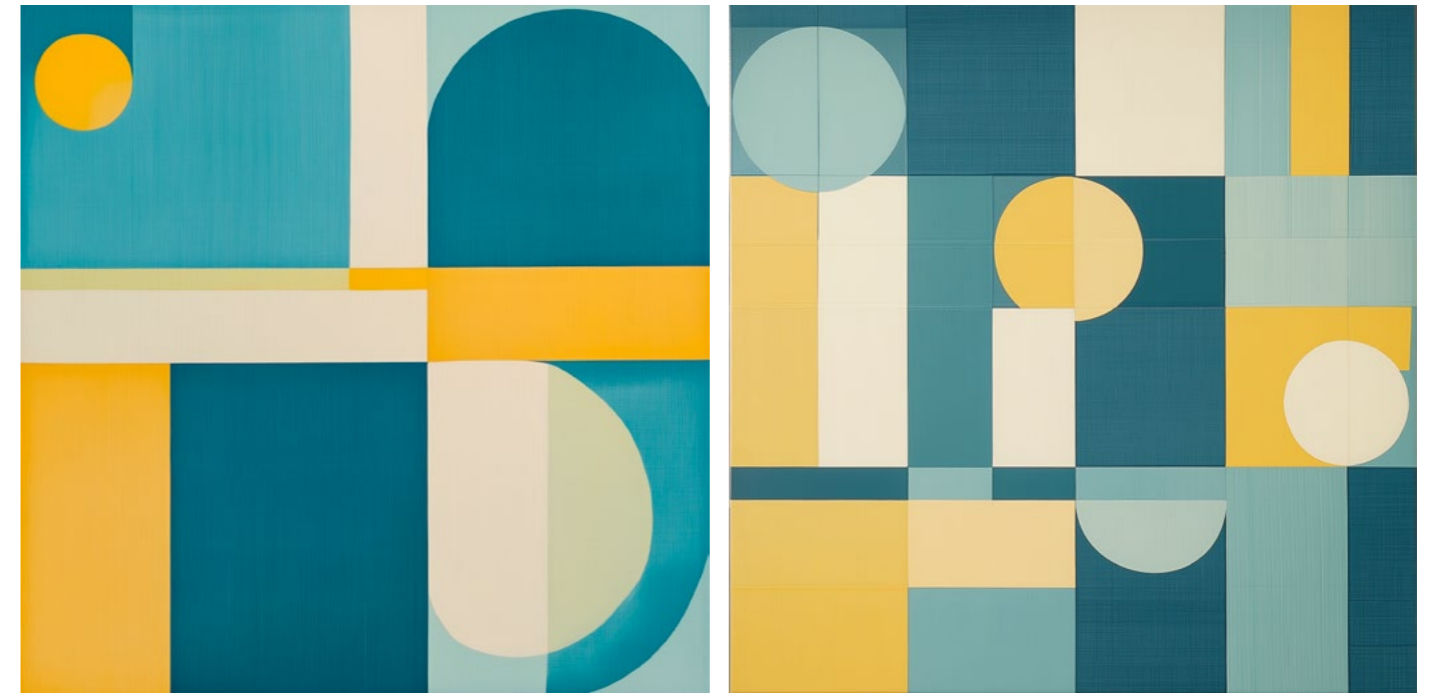
GP 0065 - Aspect ratio 1:1



GP 0066 - Aspect ratio 1:1

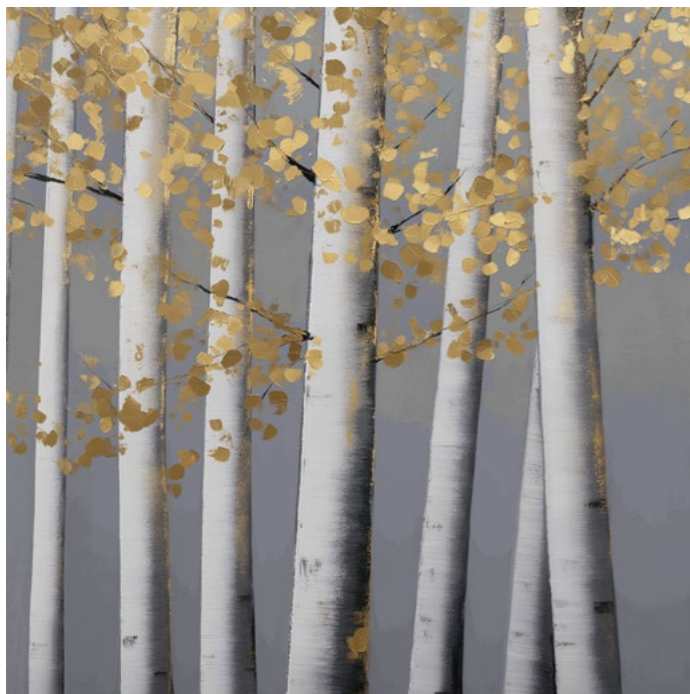
GP 0067 - Aspect ratio 1:1

GP 0068 - Aspect ratio 1:1

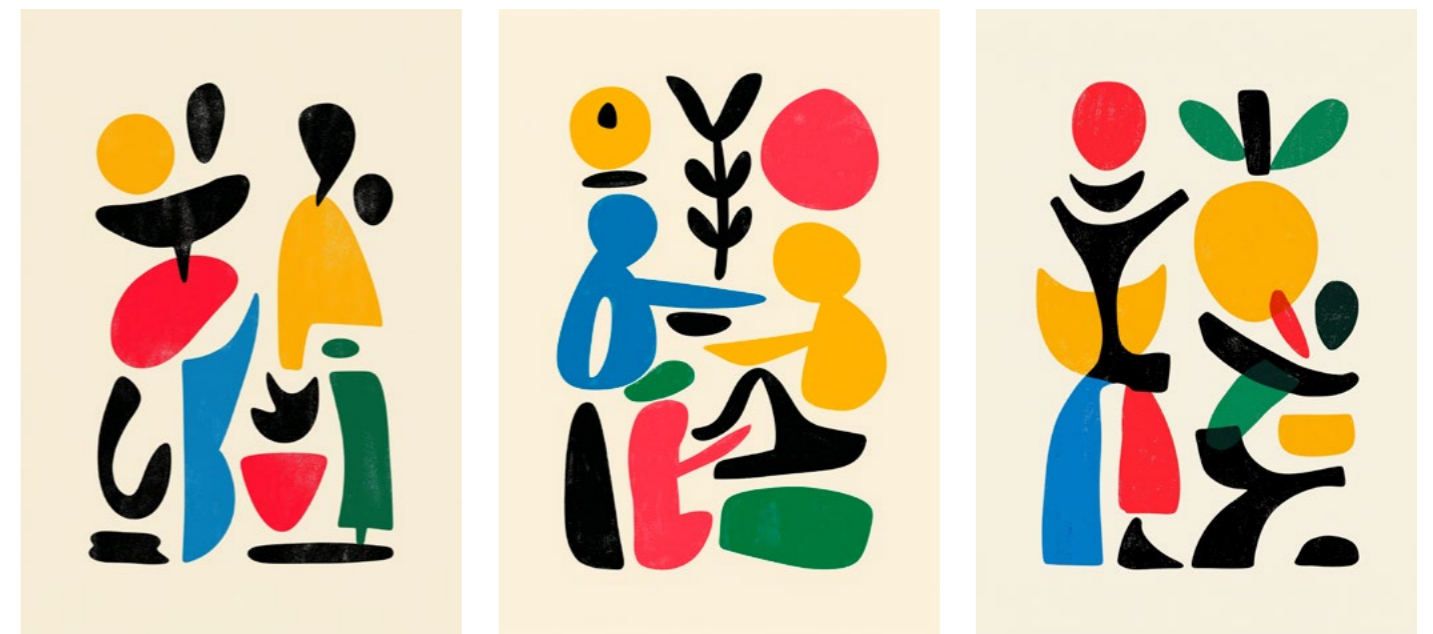


GP 0070 - Aspect ratio 1:1

GP 0071 - Aspect ratio 1:1



GP 0069 - Aspect ratio 1:1



GP 0072 - Aspect ratio 2:3

GP 0073 - Aspect ratio 2:3

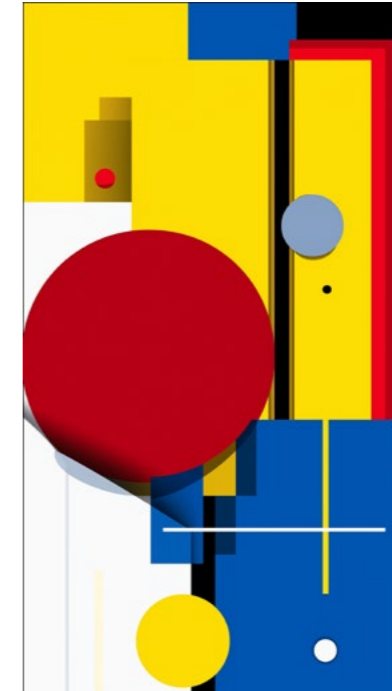
GP 0074 - Aspect ratio 2:3



GP 0075 - Aspect ratio 1:1



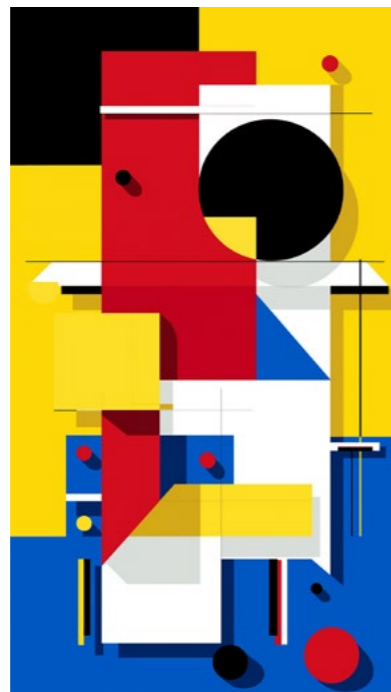
GP 0078 - Aspect ratio 5:9



GP 0079 - Aspect ratio 5:9



GP 0076 - Aspect ratio 5:9



GP 0077 - Aspect ratio 5:9

Garvan Acoustic S.R.L. owns the Garvan Acoustic Wellness brand and all the models in this catalogue. Garvan Acoustic S.R.L. reserves the right to make technical and dimensional changes and to introduce improvements that could change the aesthetics of the products in this catalogue. The printed colour references are not binding.

Garvan Acoustic S.R.L. è proprietaria del marchio Garvan Acoustic Wellness e di tutti i modelli presenti all' interno del catalogo. Garvan Acoustic S.R.L. si riserva il diritto di apportare modifiche tecniche, dimensionali e di introdurre miglioramenti che potrebbero cambiare l'estetica dei prodotti presentati in catalogo. I riferimenti colore stampati non sono vincolanti.

Garvan Acoustic S.R.L. est propriétaire de la marque Garvan Acoustic Wellness et de tous les modèles présentés dans ce catalogue. Garvan Acoustic S.R.L. se réserve le droit de procéder à des modifications techniques et dimensionnelles et d'introduire des améliorations susceptibles de modifier l'esthétique des produits présentés dans ce catalogue. Les références de couleurs imprimées ne sont pas contractuelles.

Garvan Acoustic S.R.L. besitzt die Marke Garvan Acoustic Wellness und alle im Katalog vorgestellten Produkte. Garvan Acoustic S.R.L. behält sich das Recht vor, technische und maßliche Änderungen sowie Verbesserungen vorzunehmen, die die Ästhetik der im Katalog vorgestellten Produkte verändern könnten. Die aufgedruckten Farbangaben sind unverbindlich.



Via Vittori, 21/1-2
48018 Faenza (Ra) Italy
Tel. +39 (0546) 682097
garvan@garvanacoustic.com
OFFICIAL 3+1+1 YEAR WARRANTY

Follow us on:



www.garvanacoustic.com